

Personal Ozone Monitor™

2BTECH



OPERATION MANUAL

Model POM™
(FEM)

© Copyright 2024, 2B Technologies
All rights reserved.

Technical Support:
<https://2btech.io/support/>
techsupport@2btech.io
+1(303)273-0559

Contents

IDENTIFICATION RECORDS	iv
PRINTING HISTORY	v
WARRANTY STATEMENT	vi
WARNINGS	viii
1. PERSONAL OZONE MONITOR INTRODUCTION	1
1.1. Theory of Operation.....	1
1.2. Adaptive Filter.....	4
2. SPECIFICATIONS	5
2.1. Overview.....	5
2.2. Table of Specifications: Personal Ozone Monitor (POM).....	6
3. OPERATION	7
3.1. Shipping Box Contents.....	7
3.2. Operation of the Personal Ozone Monitor.....	7
3.3. Measurement of the Zero Offset.....	8
3.4. Collecting Data over the USB Port or Serial Port in Real Time.....	8
3.5. Serial Output at Startup.....	9
4. GPS	10
5. FRONT PANEL MENU	11
5.1. Menu Tree.....	11
5.2. Data Averaging and Data Logging Using the Menu.....	12
5.3. Navigating the Front Panel Menu.....	12
5.4. Entering the Front Panel Menu.....	12
5.5. Acquiring Data without Logging.....	12
5.6. To Begin Logging Data.....	13
5.7. To Stop Logging Data.....	14
5.8. To Average Data.....	15
5.9. Capturing the Transmitted Logged Data Using the USB or Serial Port.....	15
5.10. To Set the Calibration Parameters.....	16
5.11. To Set the Time and Date.....	17
5.12. Viewing the Power Supply Voltage via the Front Panel.....	17
5.13. Viewing GPS Coordinates via the Front Panel.....	17
6. LAMP TEST	18
7. QUIET MODE	19
8. SERIAL AND USB MENU	19
9. USB INSTALLATION	21
9.1. Items Required if not using Windows 10.....	21
9.2. Driver Installation (if not using Windows 10).....	21

10. USING THE USB CONNECTION	24
10.1. Determine the Connection Port	24
10.2. Using the Connection	25
11. CALIBRATION	26
11.1. Overview	26
11.2. Equipment Required	27
11.3. Instrument Preparation	27
11.4. Calibration Setup Preparation	27
11.4.1. Setup Check	28
11.4.2. Ozone Loss Test	28
11.4.3. Linearity Check	28
11.4.4. Intercomparison Test	29
12. CALIBRATION PROCEDURE	29
12.1. Instrument Preparation	29
12.2. Measurement of Zero Air	29
12.3. Measurement of Ozone Standards	30
12.4. Calibration Curve	30
12.5. Periodic Zero and Span Checks	30
13. MAINTENANCE/TROUBLESHOOTING	32
14. LABELED INSTRUMENT PHOTOS	35
15. PARTS LIST	38
16. SERVICE LOG	39
Appendix A: Using the 2B Technologies Display and Graphing Software	41

IDENTIFICATION RECORDS

Record the following information for future reference:

Serial number: _____

Warranty start date: _____
(date of receipt)

PRINTING HISTORY

This manual covers the Personal Ozone Monitor (POM)[™] used for measurement of ozone concentrations in air. New editions of this manual are complete revisions that reflect updates to the instrument itself, as well as clarifications, additions, and other modifications of the text.

Revision A.....	March 2012
Revision B.....	January 2014
Revision C.....	February 2014
Revision D.....	April 2015
Revision E.....	August 2016
Revision E-2.....	August 2017 <i>(Correction to Equation 2 on page 2; added info in Sections 5.6, 5.8, and 5.10; minor formatting changes.)</i>
Revision F (serial no. 1223 and above).....	November 2017 <i>(Max power source voltage changed from 24V to 12V.)</i>
Revision F-2 (serial no. 1223 and above).....	November 2018 <i>(Updated several website links. Other minor formatting changes.)</i>
Revision F-3 (serial no. 1223 and above).....	April 2019 <i>(Updated USB instructions related to Windows 10 systems in Section 9. Updated Section 15. Other minor edits.)</i>
Revision F-4 (serial no. 1223 and above).....	October 2019 <i>(Updated inlet fitting description of Section 3.2, near bottom of page 7, to reflect that it is metal.)</i>
Revision F-5 (serial no. 1223 and above).....	July 2020 <i>(In Section 4, added reference to a new Tech Note 051 that enables conversion of the POM's GPS lat/long coordinates, and noted ability to display POM location and ozone data using Google Earth. Additions to Appendix A describing the use of Google Earth.)</i>
Revision G-1.....	March 2021 <i>(Correction to information about adaptive filter default settings in Sections 1.2 and 8.)</i>
Revision G-2.....	April 2021 <i>(Adjusted lower limit of photodiode voltage range from 0.6V to 0.3V [Sections 6 and 13].)</i>
Revision G-3.....	November 2022 <i>(Corrected Section 1.1 text related to the temperature pressure units choices in the POM. Updated Parts list.)</i>
Revision G-4.....	March 2023 <i>(Clarifications to Figure 12.1 and Section 3.2 that the sample air pulled in by the internal pump is output to the inside of the enclosure and is vented out the front of the POM. Additional info added to Section 3.2 about minimizing inlet tubing length to maintain pump performance.)</i>
Revision G-5.....	December 2023 <i>(Updated hyperlinks.)</i>
Revision G-6.....	January 2024 <i>(Updated Section 1.1 with a link to our published paper. Added a caution to Section 3.2 about not pressurizing the inlet of the instrument.)</i>
Revision G-7.....	October 2024 <i>(Updated serial commands, Section 8. New Section 3.5 on serial output upon startup.)</i>

TRADEMARKS & PATENTS

2B Technologies[™], 2B Tech[™], 2B[™], Personal Ozone Monitor[™] and POM[™] are trademarks of 2B Technologies.

CONFIDENTIALITY

The information contained in this manual may be confidential and proprietary and is the property of 2B Technologies. Information disclosed herein shall not be used to manufacture, construct, or otherwise reproduce the goods disclosed herein. The information disclosed herein shall not be disclosed to others or made public in any manner without the expressed written consent of 2B Technologies.

© Copyright 2B Technologies
All rights reserved.

WARRANTY STATEMENT

2B Technologies warrants its products against defects in materials and workmanship. 2B Technologies will, at its option, repair or replace products that prove to be defective. The warranty set forth is exclusive and no other warranty, whether written or oral, is expressed or implied. 2B Technologies specifically disclaims the implied warranties of merchantability and fitness for a particular purpose.

Warranty Period

The warranty period is one (1) year from date of receipt by the purchaser, but in no event more than thirteen (13) months from original invoice date from 2B Technologies.

Warranty Service

Warranty Service is provided to customers via web ticket, email and phone support, Monday - Friday, from 9:00 a.m. to 5:00 p.m., Mountain Time USA. The preferred method of contacting us is through our web ticketing software at:

<https://2btech.io/support/>

This way all technical staff at 2B Tech will be alerted of your problem and be able to respond. When you receive an email reply, please click on the Ticket link provided to continue to communicate with us directly over the internet. The web ticket approach to customer service allows us to better track your problem and be certain that you get a timely response. We at 2B Tech pride ourselves on the excellent customer service we provide.

You may also contact us by email at techsupport@2btech.io or by phone at +1(303)273-0559. In either case, a web ticket will be created, and future communications with you will be through that ticket.

Initial support involves trouble-shooting and determination of parts to be shipped from 2B Technologies to the customer in order to return the product to operation within stated specifications. If such support is not efficient and effective, the product may be returned to 2B Technologies for repair or replacement. Prior to returning the product, a Repair Authorization Number (RA) must be obtained from the 2B Technologies Service Department. We will provide you with a simple Repair Authorization Form to fill out to return with the instrument.

Shipping

2B Technologies will pay freight charges for replacement or repaired products shipped to the customer site. Customers shall pay freight charges for all products returning to 2B Technologies.

Conditions

The foregoing warranty shall not apply to defects resulting from improper or inadequate maintenance, adjustment, calibration or operation by customer. Maintenance, adjustment, calibration or operation must be performed in accordance with instructions stated in this manual. Usage of maintenance materials purchased from suppliers other than 2B Technologies will void this warranty.

Limitation of Remedies and Liability

The remedies provided herein are the Customer's sole and exclusive remedies. In no event shall 2B Technologies be liable for direct, indirect, special, incidental or consequential damages (including loss of profits) whether based on contract, tort or any other legal theory. The Personal Ozone Monitor manual is believed to be accurate at the time of publication and no responsibility is taken for any errors that may be present. In no event shall 2B Technologies be liable for incidental or consequential damages in connection with or arising from the use of the Personal Ozone Monitor manual and its accompanying related materials. Warranty is valid only for the country designated on the 2B Technologies quote or invoice.


WARNINGS

ENGLISH



WARNING:
Any operation requiring access to the inside of the equipment, could result in injury. To avoid potentially dangerous shock, disconnect from power supply before opening the equipment.

WARNING:

This symbol, , on the instrument indicates that the user should refer to the manual for operating instructions.

WARNING:


If this instrument is used in a manner not specified by 2B Technologies, USA, the protection provided by the instrument may be impaired.

ESPAÑOL



ATENCIÓN:
Cualquier operación que requiera acceso al interior del equipo, puede causar una lesión. Para evitar peligros potenciales, desconectarlo de la alimentación a red antes de abrir el equipo.

ATENCIÓN:

Este símbolo, , en el instrumento indica que el usuario debería referirse al manual para instrucciones de funcionamiento.

ATENCIÓN:


Si este instrumento se usa de una forma no especificada por 2B Technologies, USA, puede desactivarse la protección suministrada por el instrumento.

FRANÇAIS



ATTENTION:
Chaque opération à l'intérieur de l'appareil, peut causer du préjudice. Afin d'éviter un choc qui pourrait être dangereux, déconnectez l'appareil du réseau avant de l'ouvrir.

ATTENTION:

Le symbol, , indique que l'utilisateur doit consulter le manuel d'instructions.

ATTENTION:


Si l'instrument n'est pas utilisé suivant les instructions de 2B Technologies, USA, les dispositions de sécurité de l'appareil ne sont plus valables.

DEUTSCH



WARNHINWEIS:
Vor dem Öffnen des Gerätes Netzstecker ziehen!

WARNHINWEIS:

Dieses, , auf dem Gerät weist darauf hin, daß der Anwender zuerst das entsprechende Kapitel in der Bedienungsanleitung lesen sollte.

WARNHINWEIS:


Wenn das Gerät nicht wie durch die Firma 2B Technologies, USA, vorgeschrieben und im Handbuch beschrieben betrieben wird, können die im Gerät eingebauten Schutzvorrichtungen beeinträchtigt werden.

ITALIANO



ATTENZIONE:
Qualsiasi intervento debba essere effettuato sullo strumento può essere potenzialmente pericoloso a causa della corrente elettrica. Il cavo di alimentazione deve essere staccato dallo strumento prima della sua apertura.

ATTENZIONE:

Il simbolo, , sullo strumento avverte l'utilizzatore di consultare il Manuale di Istruzioni alla sezione specifica.

ATTENZIONE:


Se questo strumento viene utilizzato in maniera non conforme alle specifiche di 2B Technologies, USA, le protezioni di cui esso è dotato potrebbero essere alterate.

DUTCH



OPGELET:
Iedere handeling binnenin het toestel kan beschadiging veroorzaken. Om iedere mogelijk gevaarlijke shock te vermijden moet de aansluiting met het net verbroken worden, vóór het openen van het toestel.

OPGELET:

Het symbool, , geeft aan dat de gebruiker de instructies in de handleiding moet raadplegen.

OPGELET:


Indien het toestel niet gebruikt wordt volgens de richtlijnen van 2B Technologies, USA gelden de veiligheidsvoorzieningen niet meer.

CHINESE



警告:
任何需要接触设备内部的操作均可能造成人身伤害。为避免可能的触电危险，请在打开设备前切断电源。

警告:

这个符号 , 在仪器上表示用户应参考说明书上的操作指南。

警告:


如果仪器没有按照美国2B科技公司指定方式操作，仪器的保护性能会减弱。

JAPANESE



警告:
機器の内部で操作する時、怪我できます。危険な衝撃を回避するために、機器を開ける前に、電源を切断してください。

警告:

機器でこの記号 , を見れば、マニュアルを読んでください。

警告:

この機器は2Bテクノロジー会社、USAの指定でなければ、機器の保護が損なえます。

1. PERSONAL OZONE MONITOR INTRODUCTION

The 2B Technologies Personal Ozone Monitor™ (POM™) is designed to enable accurate measurements of ozone in air over a wide dynamic range extending from a limit of detection of 3 parts-per-billion by volume (ppb) to an upper limit of 10 parts-per-million (ppm) based on the well-established technique of absorption of ultraviolet light at 254 nm. Note that throughout this manual and in the instrument output, “ppb” (identical to “ppbv”) refers to parts-per-billion by volume (not weight). The Personal Ozone Monitor is small (4.0" × 3.0" × 1.5"; 10.2 × 7.6 × 3.9 cm), lightweight (0.75 lb; 0.34 kg) and has a low power consumption (3.0 watt) relative to conventional instruments and is therefore well suited for applications such as:

- Long-term monitoring at remote locations where power is highly limited
- Monitoring and control of ozone in industrial settings
- Monitoring of exposure to individuals in the workplace
- Personal exposure monitoring for studies of health effects of air pollutants

The POM has been designated by the U.S. Environmental Protection Agency as a Federal Equivalent Method (FEM) for ozone ([EQOA-0815-227](#)).

For aircraft flights where high temporal and spatial resolution is desired, the Model 205 Ozone Monitor is recommended.

1.1. Theory of Operation

Absorption of UV light has long been used for measurements of atmospheric ozone with high precision and accuracy. The ozone molecule has an absorption maximum at 254 nm, coincident with the principal emission wavelength of a low-pressure mercury lamp. Fortunately, few molecules found at significant concentrations in the atmosphere absorb at this wavelength. However, interferences, such as organic compounds containing aromatic rings, can occur in highly polluted air. For additional information about UV-absorbing interferences and how to estimate their contributions see [Tech Note #040](#).

Figure 1.1 is a schematic diagram of the Personal Ozone Monitor. Ozone is measured based on the attenuation of light passing through a 15-cm absorption cell fitted with quartz windows. The 15-cm cell length is accomplished by using a “U” shaped cell with mirrors in the corners to transmit light from the lamp at one end to the detector at the other. A low-pressure mercury lamp is located on one side of the absorption cell, and a photodiode is located on the opposite side of the absorption cell. The photodiode has a built-in interference filter centered on 254 nm, the principal wavelength of light emitted by the mercury lamp. An air pump draws sample air into the instrument at a flow rate of approximately 0.75 L/min. A solenoid valve switches so as to alternately send this air directly into the absorption cell or through an ozone scrubber and then into the absorption cell.

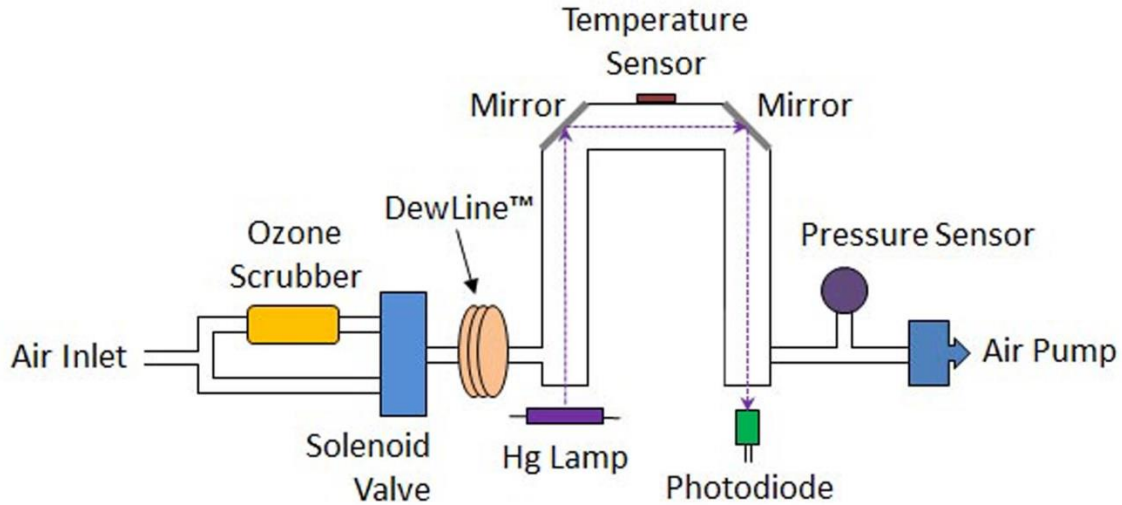


Figure 1.1. Schematic Diagram of the Personal Ozone Monitor.

The intensity of light at the photodiode is measured in air that has passed through the ozone scrubber (I_o) and air that has not passed through the scrubber (I). Ozone concentration, $[O_3]$, in units of molecules/cm³ is calculated from the measurements of I_o and I according to the Beer-Lambert Law:

$$[O_3] = \frac{1}{\sigma l} \ln \left(\frac{I_o}{I} \right) \quad (1)$$

where l is the path length (15 cm) and σ is the absorption cross section for ozone at 254 nm (1.15×10^{-17} cm² molecule⁻¹ or 308 atm⁻¹ cm⁻¹), which is known with an accuracy of approximately 1%. The 2B Technologies instrument uses the same absorption cross section (extinction coefficient) as used in other commercial instruments.

In order to convert this concentration to a mixing ratio (fraction of total air molecules that are ozone), we also measure the cell temperature and pressure, which determines the total concentration of air molecules. From the temperature and pressure, we use the ideal gas law to calculate the concentration of molecules, M , in the detection cell. Ozone in units of ppb is then given by:

$$[O_3]_{ppb} = 10^9 \frac{[O_3]}{[Air]} = 10^9 \frac{RT}{N_A P l \sigma} \ln \left(\frac{I_o}{I} \right) \quad (2)$$

where N_A is Avogadro's number ($6.02214129 \times 10^{23}$ molec/mol), R is the gas constant (82.05746 cm³ atm K⁻¹ mol⁻¹), T is the absolute temperature in K, and P is the cell pressure in atmospheres.

The instrument displays and records the cell temperature and pressure in addition to the ozone mixing ratio. The cell pressure is displayed and logged in units of torr and the cell temperature in units of K (Kelvin).

Shown on Fig. 1.1 is the DewLine™, which serves to make the humidity entering the detection cell identical during I and I_o measurements. Please see our website for a technical discussion of the DewLine™ and its importance to ozone measurements: <https://2btech.io/dewline/>. Briefly, water vapor adsorbed to the inner wall of the detection cell changes the reflectivity of the cell. If humidity is not the same during I and I_o measurements, an offset in the ozone measurement will occur and can be up to several tens of ppb for sudden changes in ambient humidity. The offset will change with time as the internal ozone scrubber equilibrates with water vapor. Even for fixed-site ozone monitors, an offset measurement error will occur if the instrument is zeroed with dry tank air and then used to measure ozone in humid air. The DewLine™ solution to this often-ignored problem is unique to 2B Tech instruments.

In principle, the measurement of ozone by UV absorption requires no external calibration; it is an absolute method. However, non-linearity of the photodiode response and electronics can result in a small measurement error. Therefore, each instrument is compared with a NIST-traceable standard ozone photometer in the laboratory over a wide range of ozone mixing ratios. These results are used to calibrate the POM with respect to an offset and slope (gain or sensitivity). The corrections for offset and slope are recorded in the instrument Birth Certificate. These calibration parameters are entered into the microprocessor prior to shipment. The user may change the calibration parameters from the front panel if desired. It is recommended that the instrument be recalibrated at least once every year and preferably once every six months. The offset may drift due to temperature change or chemical contamination of the absorption cell. As discussed below, an accurate offset correction can be measured from time to time using the external ozone scrubber (Zeroing Cartridge) supplied with the instrument.

An animated video explaining how a UV-absorbance ozone monitor works is posted on the 2B Tech website at: <https://2btech.io/videos/>

We published a paper on the Personal Ozone Monitor in the journal *Analytical Chemistry*, linked below:

[Miniature Personal Ozone Monitor Based on UV Absorbance](#), P.C. Andersen, C.J. Williford and J.W. Birks, *Analytical Chemistry* **82**, 7924-7928 (2010).

1.2. Adaptive Filter

The POM firmware processes sample concentration data through a built-in adaptive filter. During operation, the firmware may automatically switch between two different filter lengths based on the conditions at hand. The default settings of the filter, as set by the factory before shipment, are: long average length 50 measurements, short average length 10 measurements, filter difference 0 measurements, and filter percent difference 0%. The first two settings mean that during the measurement of stable concentrations, the firmware computes an average of the last 50 raw (2-second) measurements (the long filter), or approximately 1.5 minutes. This provides smooth and stable readings by averaging out a considerable amount of random noise to improve the precision. If the filter detects rapid changes in concentration, the filter reduces the averaging to only 10 samples (the short filter) or about 20 seconds to allow the analyzer to respond more quickly. The next two settings are for the two conditions that must be simultaneously met to switch to the short filter. First, the instantaneous concentration must differ from the average in the long filter by at least the filter difference setting (for the default setting, this is 0 ppb). Second, the instantaneous concentration must differ from the average in the long filter by at least the specified percentage difference of the average in the long filter (by default, 0%). In the default setting, the short filter is always on and the quicker response mode is in effect. For example, in this mode with the instrument on the 10-second measurement setting, the user is getting a 20-second rolling average output/update every 10 seconds. With the instrument on the 2-second measurement setting, the user gets a 20-second rolling average with output/update every 2 seconds.

The lengths of the long and short filter can be changed as well as the minimum difference and percent difference. This can be done via the serial or USB connection as outlined in the Serial Menu section in this manual (Section 8).

As noted above, when the instrument is shipped from the factory, the default settings of the adaptive filter are: short filter length = 10, long filter length = 50, difference = 0, and percent difference = 0%.

If the user wants real-time data, the adaptive filter can be disabled. To disable the adaptive filter, set the short filter length to 1, the difference to 0, and the percent to 0. In this case when the instrument is on the 2-second measurement setting, the data will be true 2-second data.

2. SPECIFICATIONS



2.1. Overview

2B Tech has taken the next step in miniaturization of UV-based ozone monitors by developing the Personal Ozone Monitor or “POM.” The POM has dimensions of 4 x 3 x 1.5 inches and weighs only 0.75 lb. (340 g). It has a built in GPS so that ozone measurements may be logged continuously along with geographic location. By folding the optical path in the shape of a “U,” it was possible to achieve the same path length in the POM as in the Models 202, 205, and 106-L and thus have similar precision and accuracy (~1.5 ppb or better). The POM’s many possible applications include:

- Personal exposure monitoring for studies of health effects of air pollutants
- Health and safety monitoring at industrial sites using ozone
- Citizen science and educational measurements such as GO3 Treks
- Vertical profiling using balloons, kites, RPVs and light aircraft where space and weight are highly limited
- Long-term monitoring at remote locations where power is highly limited
- Urban arrays of ground-based detectors

The POM has been designated by the U.S. Environmental Protection Agency as a Federal Equivalent Method (FEM) for ozone ([EQOA-0815-227](#)).

Detailed specifications are given in the table on the next page.

2.2. Table of Specifications: Personal Ozone Monitor (POM)

Measurement Principle	UV Absorption at 254 nm
Federal Equivalent Method (FEM)	Yes, EQOA-0815-227
Linear Dynamic Range	0 ppb to 10 ppm
Resolution	0.1 ppb
Precision (1σ; rms noise)	Greater of 1.5 ppb or 2% of reading (10-s measurement mode, with default adaptive filter settings)
Limit of Detection (2σ)	3.0 ppb (10-s measurement mode, with default adaptive filter settings)
Accuracy	Greater of 1.5 ppb or 2% of reading
NIST-Traceable Calibration	Yes
Measurement Intervals	Measurement mode: 10 s; Fast mode: 2s
Flow Rate (nominal)	~0.8 Liter/min
Flow Rate Requirement	>0.5 L/min
Baseline Drift	<2 ppb/day; <5 ppb/year
Sensitivity Drift	<1%/day; <3%/year
Measurement Time, Frequency	10 s, 0.1 Hz (Fast mode: 2s, 0.5 Hz)
Response Time, 100% of Step Change	For 10-s output: 20 s, 2 data points For 2-s output: 4s, 2 data points
Data Averaging Options	1 min, 5 min, 1 hr
Data Storage	8,192 lines (2-s fast mode ~4.6 hrs; 10-s meas. mode ~1 day; 1-min avg ~6 days; 5-min avg ~1 mo; 1-hr avg ~1 yr)
Ozone Units	ppb
Pressure Units	torr
Temperature Units	K
T and P Corrected	Yes
Operating Temperature/ Pressure/Altitude Ranges	0 to 50°C; 150-1013 mbar; 0-13.5 km [lower pressure range available as an option]
Power Requirement; Supplied by battery or 110/220 VAC Power Pack	7-12 V dc, nominally 250 mA at 12 V, 3.0 watt
External Battery	7.4 volt, 1.6 amp hour, Lithium Ion Battery, 5-8 hr
Size	With GPS: 5.5 x 3.0 x 1.5 inches (14.0 x 7.6 x 3.8 cm) Without GPS: 4.0 x 3.0 x 1.5 inches (10.2 x 7.6 x 3.8 cm)
Weight	1.0 lb (454 g); without battery: 0.8 lb (360 g)
Data Transfer Baud Rate	19200
DewLine™	Yes
GPS	Yes

3. OPERATION

Please read all the following information before attempting to operate the Personal Ozone Monitor. For assistance, please call 2B Technologies at +1(303)273-0559.

NOTE:

Save the shipping carton and packing materials that came with the Personal Ozone Monitor. If the Personal Ozone Monitor must be returned to the factory, pack it in the original carton. Any repairs as a result of damage incurred during shipping will be charged.

3.1. Shipping Box Contents

Open the shipping box and verify that it contains all of the items on the shipping list. If anything is missing or obviously damaged, contact 2B Technologies immediately.

3.2. Operation of the Personal Ozone Monitor

To operate the Personal Ozone Monitor, connect it to an external power source and power the instrument by switching the power switch on. The instrument requires a 7-12 V DC source which can be supplied by: 1) the 100-240 V AC power adapter, 2) a cigarette lighter adapter plugged into a 12 V DC source such as found in an automobile or many light aircraft, or 3) a 7-12 V battery. The source can be in the range 7-12 V DC without any detrimental effects on the measurement. When using a battery, be certain to attach the positive (red) and negative (black) wires correctly. Batteries and battery chargers are available from 2B Technologies. A circuit breaker and diode are installed on the circuit board in case of an electrical short or incorrect battery attachment. If activated, the breaker will reset itself after a few minutes. Also, for safety purposes the provided 7.4-V lithium ion battery has its own protective circuit in case of a short.

Turn the instrument on with the small switch between the power connection and the GPS antenna (see Figure 14.2). Once turned on, the instrument will display the version number of the software installed on the microprocessor. After a few seconds, the instrument will start displaying readings for ozone. The first dozen readings (requiring about two minutes) will be spurious, with large positive and negative swings due to the rapid warmup of the lamp and electronics. Also, ozone readings may be inaccurate during the 10-20 minutes required for the lamp, photodiode, and internal temperature of the absorption cell to stabilize.

Inlet tubing may be attached to the metal inlet fitting on the front of the instrument (see Figure 14.1). The inlet tubing should be made of PTFE (Teflon®), PFA, FEP, PVDF, or some other inert material that does not destroy ozone and that does not desorb plasticizers and other organics that can contaminate the flow path. The length of

tubing should be kept as short as possible (preferably not more than a few feet) to minimize ozone destruction within the inlet tubing and to avoid compromising the performance of the internal pump. Tygon®, polypropylene (which may look like Teflon), and metal tubing should not be used. FEP-lined Tygon tubing, which is used inside the instrument, provides the flexibility of Tygon with the inertness of FEP. A Teflon or PVDF inlet filter is highly recommended to prevent internal contamination of the tubing and absorption cell by particulate matter. The filter should be tested for ozone loss by measuring ambient ozone with and without the filter attached. Filters and filter holders are available through 2B Technologies. The instrument does not have a plumbed exhaust. After passing through the absorption cell, the sample air is vented to the inside of the POM enclosure and a vent in the front of the instrument.

Caution: Do not pressurize the inlet of the POM. It will damage the instrument. Use a tee to vent at the inlet if you are providing a flow to the instrument.

Although the instrument compensates for temperature drift, if strong temperature fluctuations are expected, as in vertical profiling applications using balloons, the instrument should be placed in a thermally insulated box.

3.3. Measurement of the Zero Offset

The electronic zero of the instrument may be measured by attaching an ozone zeroing scrubber (2B Technologies part no. ZEREXTPOM or other ozone destruction cartridge) to the air inlet for a period of 5-10 minutes. For an accurate measurement, the instrument must have been turned on long enough for the internal temperature to stabilize. The observed offset, which can amount to \pm a few ppb, can be corrected for by changing the offset calibration parameter (Z) from the front panel, as described in Section 5.10 below.

3.4. Collecting Data over the USB Port or Serial Port in Real Time

To transmit data to a computer over the USB port or the serial port in real time, connect the Personal Ozone Monitor to the serial port of the computer using the stereo plug to D9 serial cable provided. Start your data acquisition software, preferably using the [2B Technologies Display and Graphing Software](#). See Appendix A for a description of working with this software). Other terminal emulation software such as HyperTerminal (a program provided with earlier versions of Windows) or [Tera Term](#) may be used as well.

The ozone mixing ratio (ppb), internal cell temperature (K), cell pressure (torr), time, and date are sent as comma-delimited ASCII text to the serial and USB ports (19200 baud as selected in the menu; 8 bits; no parity; 1 stop bit) every 2 seconds, 10 seconds, 1 minute, 5 minutes, or 1 hour, depending on the averaging time selected from the microprocessor menu. Time is provided in 24-hour (military) format, and the date is given in European style (day/month/year).

A typical data line would read:

3.2,307.4,608.1,1.2740,12.1,4001.27765,-10513.0308,1591.20,1,23/03/22,16:39:14

where:

Ozone = 3.2 ppb

Cell temperature = 307.4 K

Cell pressure = 608.1 torr (1 atm = 760 torr)

Photodiode Voltage = 1.2740 volts

Power Supply Voltage = 12.1 volts

Latitude = 4001.27765

Longitude = -10513.0308

Altitude = 1591.20 meters

GPS Quality = 1

Date = March 23, 2022

Time = 4:39:14 pm

If outputting logged data, the output serial data line will be preceded by the log number; e.g.,

2893,3.2,307.4,608.1,1.2740,12.1,4001.27765,-10513.0308,1591.20,1,23/03/22,16:39:14

where 2893 is the log number.

In addition to data lines, messages are written to the serial port when logging is begun or ended, when transmission of data from the logger is begun and ended, when data collection is interrupted (e.g., due to a power failure), and when the averaging time is changed.

See Section 4 below for a discussion of the units for the GPS latitude/longitude coordinates.

3.5 Serial Output at Startup

The POM will output useful information via serial upon startup, as shown in this example:

Reading Internal Memory

Serial number: 1487

Slope:1.00

Zero:0.00

GPS enabled

Pressure sensor: MPXA6115

Temperature sensor: TMP36

Valve type: PARKER_NEW_961

O3 POM VERSION xxx

Avg: 10 s/rdg

If you are working with us on troubleshooting your POM, the type of pressure sensor, temperature sensor, and valve can be useful information for our tech support.

4. GPS

The POM contains an on-board GPS unit that incorporates the well-known u-blox 6 GPS position engine and an efficient antenna system to provide highly accurate and precise location data with each ozone measurement.

To acquire satellite signals, go outdoors away from tall buildings and trees. Acquiring satellite signals may take 1-5 minutes. For best results, stand still in an open area with the POM powered on until an asterisk appears on the LCD as shown below. The **asterisk** denotes a valid satellite connection:

* O3= 2.7 ppb
T=305.4 P=682.3

As described in Section 5.13 (“Viewing GPS Coordinates via the Front Panel”), it is possible to view the GPS data in real time on the LCD by navigating to the GPS submenu. GPS coordinates, along with the GPS quality indication are also logged with each measurement when the POM is set to log. The **GPS quality indication** can be translated as:

0 = Fix not available
1 = Non-differential GPS fix available
2 = Differential GPS (WAAS) fix available
6 = Estimated.

The GPS data transmitted from the POM are formatted in the raw NMEA format.

One of the challenges in dealing with raw NMEA data (data not using a software like VisualGPS to decode it for you) is the format of the GPS coordinate. It's not user-friendly. It's expressed in DDMM.MMMMM; degrees, minutes and decimal minutes. We have created a few tools that make it easier to convert the coordinates or to quickly view it from a generated .kml file in Google Earth:

- Technical Note No. 051 provides a spreadsheet for converting the POM's GPS latitude and longitude into the decimal degree format. It may be downloaded from https://2btech.io/wp-content/uploads/docs/tech_notes/TN051.xlsx.
- Our free [2B Tech Display and Graphing software](#) can be used to display the GPS locations of your POM data using Google Earth. Please see Appendix A of this manual for information on how to use this capability.

5. FRONT PANEL MENU

5.1. Menu Tree

The following diagram summarizes the complete instrument Menu accessed via the LCD, Select, and Move buttons.

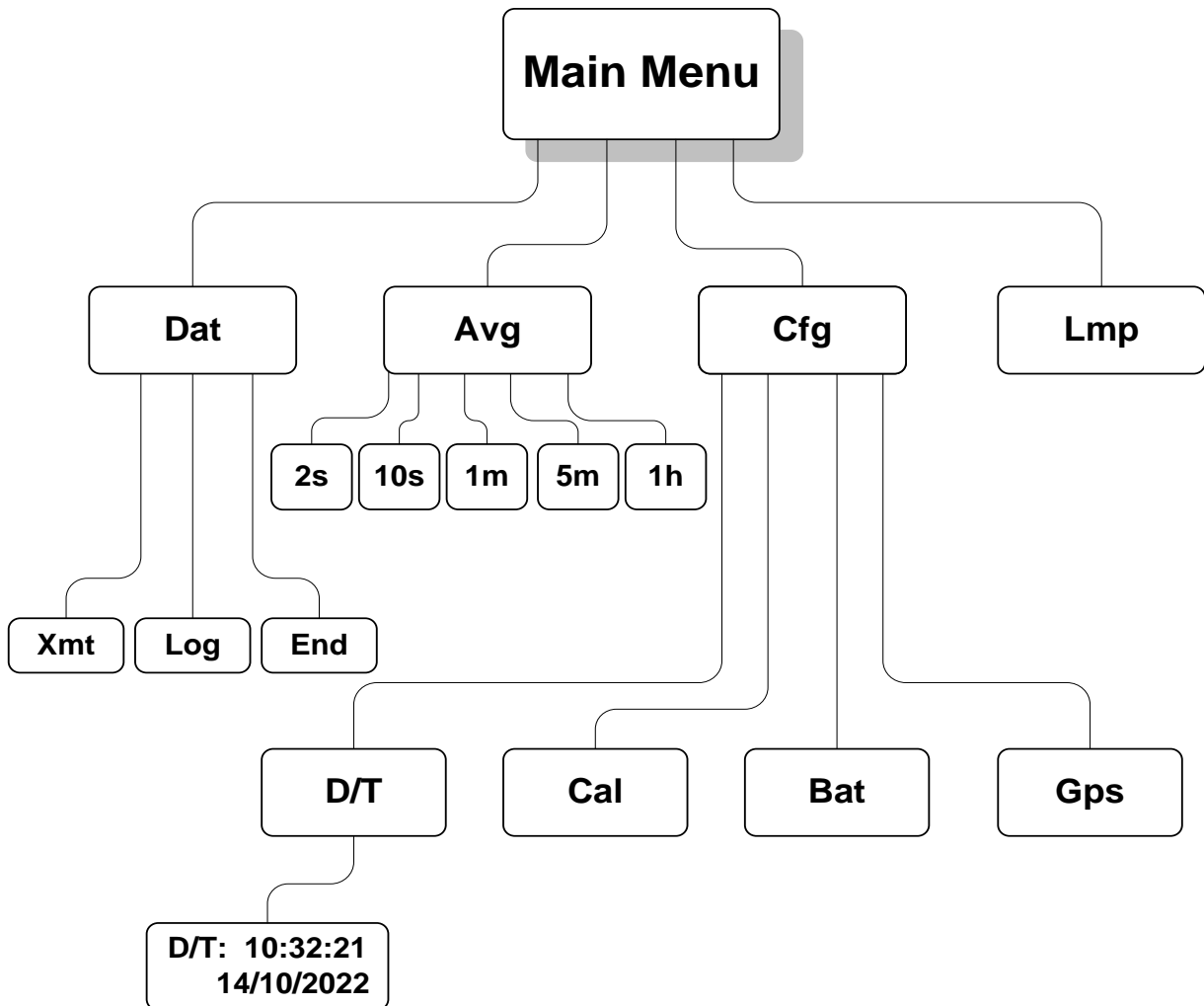


Figure 5.1. Instrument Menu.

5.2. Data Averaging and Data Logging Using the Menu

When first turned on, the instrument will start making measurements. Data may be logged in the internal data logger. Up to 8,192 data lines containing log number, ozone mixing ratio, internal cell temperature, internal cell pressure, photodiode voltage, power supply voltage, GPS latitude, GPS longitude, GPS altitude, GPS signal quality, time, and date may be stored in internal memory, corresponding to an operational time of 4.6 hours in the 2-s fast mode, and 22.8 hours in the 10-s measurement mode. Averaging times of 1 min, 5 min, and 1 hr also may be selected from the menu, thereby increasing the logging capacity to 5.6 days, 28 days, and 341 days, respectively, before filling the memory.

Note that entering the menu will interrupt the averaging interval that is in progress, and the averaging interval will start over when the menu is exited and measuring is resumed.

5.3. Navigating the Front Panel Menu

The front panel consists of a 2-row by 16-character LCD screen and two push buttons that are located below the LCD screen (see Fig. 14.1 below). The curved arrow, or “Select” button, is used to enter and exit menus and for selecting values. The right pointing arrow, or “Move” button, is used to move the cursor from left to right.

5.4. Entering the Front Panel Menu

The menu is accessed via the Select button (curved arrow) on the front panel of the instrument. To reach the main **Menu**, *hold in* the Select button until

Menu

is displayed, then release the Select button. After a few seconds the main **Menu** will appear:

Menu
Dat Avg Cfg Lmp ←

where **Dat**, **Avg**, **Cfg**, and **Lmp** are submenus that may be selected. A blinking cursor will show across the **D** of the **Dat** submenu. Clicking on the Move button will move the cursor under the first letter of one of the other submenus. To select a particular submenu, move the cursor under the first letter of a submenu by pressing the Move button and press the Select button to select the submenu. To exit the main Menu and begin making measurements again, move the cursor to the left arrow (←) and press the Select button.

5.5. Acquiring Data without Logging

Select the **Dat** submenu from the main **Menu** using the Select button. The display will now show:

Dat Menu
Xmt Log End ←

To make measurements without logging data, move the cursor to **End** and click to end the logging mode. Select ← to return to the main **Menu**, and select ← again to exit the Menu and start making measurements. Note that “←” always takes you up one level in the menu.

If the 10-s measurement mode has been selected (see Section 5.8 below), for example, the Personal Ozone Monitor will then alternate every 5 seconds between displaying the most recent 10-s measurement and the current value. For example, the display might read

O3= 30.2 ppb
T=303.3 P=689.7

where the current ozone measurement is 30.2 ppb (by volume), the internal cell temperature is 303.3 K and the internal cell pressure is 689.7 torr. Five seconds later, this display might be followed by

O3= 31.1 ppb
19:55 23/05/18

showing that the time of the measurement is 7:55 pm and the date is 23 May, 2018. If averaging of 1-min, 5-min, or 1-hr has been selected (see Section 5.8 below), the above display will be replaced by

Avg O3= 24.1 ppb
19:55 23/05/18

for example, where the most recent average value of ozone computed is 24.1 ppb. At the end of an averaging period, a new average value will be displayed along with the internal cell temperature and internal cell pressure. For example:

O3= 25.3 ppb
T=303.5 P=688.1

5.6. To Begin Logging Data

Select the **Dat** submenu from the main **Menu** using the Select button. The display will now show:

Dat Menu
Xmt Log End ←

To start logging data, move the cursor to **Log** and click to select the logging mode. You will then receive the prompt:

Overwrite Data?
No Yes ←

Warning: If you start logging, all data previously stored in the logger will be irretrievably lost.

If you have data in the logger that you want to keep, be sure to download it (see Section 5.9 below) before starting logging. Select **Yes** if you are sure you want to start logging new data. This will return you to the **Dat** submenu. Select ← to return to the main **Menu**, and select ← again to exit the Menu and start making measurements. As previously mentioned, note that “←” always takes you up one level in the menu.

If data are being logged and averaged, the log number and the number of new measurements made for the next average (minus 1) are displayed in place of the date and time; e.g.,

Avg O3= 29.1 ppb
Log= 193:4

where **Avg O3** is the average ozone value most recently written to the logger, and the current log number is 193. The “4” in 193:4 refers to the number of 10-s data points that have been measured so far for inclusion in the next average to be displayed and logged. If 1-min averaging is used, this number will increment from 0 to 5; for 5-min averaging, the number will increment from 0 to 29; and for 1-hr averaging, it will increment from 0 to 359. This number is displayed so that the user will know how many more 10-s measurements need to be made before a new average is displayed and logged.

Note that entering the menu will interrupt the averaging interval that is in progress, and the averaging interval will start over when the menu is exited and measuring is resumed.

If there is a power failure while the instrument is in the logging mode, logging will resume after power is restored. A note of “Data Interruption” will be written to the logger prior to writing the first new data line. The instrument can accommodate multiple data interruptions due to power failures. For example, one can purposely switch the instrument off, move to another location and restart logging simply by turning the instrument back on. Data sets will be separated by the data interrupt message.

5.7. To Stop Logging Data

Hold in the Select button to obtain the main **Menu**. Go to the **Dat** submenu by clicking on **Dat**. Select the **End** function. This will end data logging. You may now return to the **Dat** menu to transmit the data to a computer by selecting **Xmt** (see below). The stored data will reside in memory (even when new measurements are being made) and can be transmitted using the **Xmt** function as often as you like.

Note: All stored data are lost once logging is started again using the Log function.
Thus, you should always transmit your data to a computer before restarting logging.

If you fail to **End** logging prior to transmitting the data using the **Xmt** function, the instrument will automatically execute the **End** function for you prior to transmitting the data.

5.8. To Average Data

Hold down the Select button to obtain the main **Menu**. Select **Avg** to obtain the **Avg** menu:

Avg Menu
2s 10s 1m 5m 1h←

Use the Move button to move the cursor to **2s**, **10s**, **1m**, **5m** or **1h** for times of 2 s (fast mode), 10 s (measurement mode), 1-min averaging, 5-min averaging, or 1-hr averaging, respectively. Then select the time you want to use. You will be returned to the main **Menu**. To exit the main Menu and start acquiring data, select ← again.

While in an averaging mode, the current 10-s measurement is displayed alternately with the average value at 5-s intervals, as discussed above. Averaged data may be logged, thereby greatly extending the length of time that the data logger can be used.

Note that entering the menu will interrupt the averaging interval that is in progress, and the averaging interval will start over when the menu is exited and measuring is resumed.

5.9. Capturing the Transmitted Logged Data Using the USB or Serial Port

Connect the USB or serial port of the instrument to your computer using the appropriate cable. Enable a data acquisition program on the computer such as the [2B Technologies Display and Graphing Software](#).

See Appendix A for a description of working with this software. Alternatively, HyperTerminal can be used (available on most earlier Windows® platforms, usually in Start/All Programs/Accessories/Communications/Hyper Terminal) or [Tera Term](#).

The correct settings for receiving data are: chosen baud rate 19200; 8 bits; no parity; 1 stop bit.

Enter the main **Menu**. Go to the **Dat** submenu by clicking on **Dat**. Next, select **Xmt**. The message “Transmitting logged data” will be written to the serial port, followed by a carriage return and all of the lines of logged data. After all data are transmitted, the message “End Logged Data” and a carriage return are written. After transmission is complete, you can return to any position in the menu or resume ozone measurements without logging. The previously logged data continues to be available for transmission until a new data logging session is started.

5.10. To Set the Calibration Parameters

The instrument is calibrated at the factory where slope (S) and offset (Z) parameters are entered into the instrument's memory. These preset calibration parameters are given in the instrument's Birth Certificate and recorded on the calibration sticker on the bottom of the instrument. However, the calibration parameters may be changed by the user. Because of noise and/or an inherent offset, some measured values will be below zero at very low ozone mixing ratios or while zeroing the instrument with an external scrubber. Also, the instrument zero may drift by a few ppb over time. For this reason, frequent zeroing of the instrument using an external ozone scrubber to determine the offset is recommended. Any change in the slope (gain) of the instrument is likely due to a serious problem such as contamination, an air leak, obstruction of air flow, or loss of catalytic activity by the internal ozone scrubber, but it also can be adjusted. Once the zero of the instrument is corrected, the slope may be adjusted so that the instrument readout agrees with a standard ozone source (such as the [2B Technologies Model 306 Ozone Calibration Source™](#)) or with the readout from another instrument whose calibration is considered to be accurate.

To change the calibration parameters, choose the **Cfg** submenu from the main **Menu** and click on **Cal** to obtain the display

Cal Menu
Z= -3 S= 1.01

Here Z is the offset applied in units of ppb (in this case -3 ppb) and S is the slope applied (in this case 1.01). The value of Z is added to the measured ozone value, and the value of S is then multiplied by the measured ozone value. During calibration Z is set to 0 and S set to 1.00, if the instrument reads an average of 3 ppb with the external scrubber in place, the value of Z should be set to -3. If after correction for the zero, the instrument consistently reads 2% low, the value of S should be set to 1.02. If a calibration is done in units other than ppb, the offset (Z) value must be converted to ppb before entering the value.

When the **Cal Menu** first appears, the **Z** will be underlined with a cursor. You may move the cursor to choose the calibration parameter **S** or **Z**. Selecting **S** or **Z** will select that parameter for change and activate a blinking cursor. Once **S** or **Z** is selected, its value can be changed by pressing the Move button to increase the value. The value will roll-over to negative values after reaching the maximum allowable offset (-50 to +50 for Z, 0.5 to 1.5 for S). After choosing the desired value, press the curved arrow to exit stop editing mode. The cursor can then be moved by pressing the right pointing arrow to the **S** to edit the slope or to the ← to exit the submenu. Once the values of **Z** and **S** are set, selecting ← will return the display to the **Cfg** menu, and again selecting ← will return to the main **Menu**. The calibration parameters reside in non-volatile memory and are not affected by power failures.

In order to adjust the zero offset, after the instrument has warmed up for at least 20 minutes attach the external ozone scrubber and make measurements for a few minutes. If the average of those measurements is 4.4 ppb, for example, subtract 4

from the current value of Z; e.g., if Z was set to 3 during the measurements, change Z to -1. For more details about calibrating the Personal Ozone Monitor against another instrument or calibrated ozone source, see the “Calibration” section of this manual or refer to [Tech Note No. 15](#).

5.11. To Set the Time and Date

From the main **Menu**, select the **Cfg** submenu. Next, select the **D/T** submenu. The display will read, for example:

D/T: 14:32:21 ←
17/10/2022

meaning that it is 21 seconds after 2:32 p.m. on October 17, 2022 (military time and European date). To change a number in the date and time, move the cursor to underline the numeral you want to change. Pressing the Select button then causes a blinking cursor to cover that numeral. The number can then be changed by pressing the Move button. Once the number is correct, press the Select button to turn off the blinking cursor. You may now use the Move button to choose another numeral to change. Once the time and date is correct, selecting ← will set the internal clock to that time and return the display to the **Cfg** menu. As in setting a digital watch, the seconds should be set in advance of the real time since the clock starts to run again only when the set time is entered; in this case by selecting ←.

5.12. Viewing the Power Supply Voltage via the Front Panel

To view the power supply voltage in real time, select **Bat** from the **Cfg** Menu. Exit this view by pressing the Select button.

5.13. Viewing GPS Coordinates via the Front Panel

To view real time Latitude, Longitude and Altitude data, select **GPS** from the **Cfg** Menu. Latitude and Longitude are constantly shown and Altitude (in meters) is available by pressing and holding the Move button. Exit this view by pressing the Select button.

6. LAMP TEST

If the instrument is excessively noisy (standard deviation greater than 2 ppb) when measuring clean or zero air, or always reads near zero in the presence of ozone, it is useful to perform the lamp test to make sure that the lamp is turning on and does not fluctuate too rapidly. Before performing the lamp test, allow the instrument to warm up for at least twenty minutes.

Choose **Lmp** from the main **Menu**. The display will momentarily read "**Lamp Test.**" The photodiode voltage will then be displayed, and after a few lamp measurements have been made, the electronic offset and standard deviation also will be displayed as, for example:

PDV= 0.89801 V
1.2+/-1.85 ←

The photodiode voltage (PDV) is a measure of the lamp intensity and should be in the range 0.3-2.2 volts. Since absorbance is a ratio measurement, the absolute value of the voltage is not particularly important. However, above 2.5 volts, which could occur if the instrument is allowed to become too hot, the photodiode is saturated and the calculated ozone concentration will be zero. Photodiode voltage less than 0.3 volts is indicative of either a weak lamp or a dirty detection cell and may result in a noisy measurement. The photodiode voltage will typically increase as the instrument warms up. Lamp drift is continuously monitored and corrected for in the firmware and thus has very little effect on the measured ozone concentration.

Once the instrument is warmed up, fluctuations in photodiode voltage should be limited primarily to the last digit displayed. The lamp test also calculates an electronic offset and standard deviation of the measurement itself, displayed in the above example as 1.2 ppb for the electronic offset and +/-1.85 for the standard deviation. The standard deviation is a quantitative measure of the lamp and associated electronic noise. Electronic offsets should normally be -5 to 5 ppb equivalent. After running the lamp test for a few minutes, values above 2.50 for the standard deviation usually indicate an excessively noisy lamp. Lamps seldom "burn out" but may become noisy with time and need to be replaced. Some lamps become noisy after only a short period, while others will be extremely stable for years. If your lamp fails the lamp test during the first year of operation, contact us for a new lamp under the instrument warranty. Contamination of the detection cell may also cause a high standard deviation, in which case the flow path should be cleaned with methanol and the internal ozone scrubber replaced. Please contact us to return the instrument to 2B Tech for cleaning and/or lamp replacement.

To exit the Lamp Test, press and hold the Select button.

7. QUIET MODE

The POM firmware allows the user to select a “quiet mode” where the pump will be throttled down to decrease the high pitch frequency sound output. This can be done one of two ways. The user can press and hold the Select button while powering on the POM to display

Pump Mode
Quiet Fast ←

where the user can select “**Quiet**,” which will slow the pump down and change the instrument flush cycle time from 2 seconds to 4 seconds. This setting will also change the 10 second averaging time to 20 seconds.

Restarting the instrument and changing back to “**Fast**” will reset the flush time to 2 seconds. Another way to change the pump mode is through the serial menu as described in the next section.

8. SERIAL AND USB MENU

Measurements and logging tasks can be accessed via the serial port or the USB using the 2B Technologies Data Display software (see Appendix A) or a terminal emulator such as Tera Term or HyperTerminal running on an attached computer. Commands can be sent using the terminal emulator set with the properties listed in the section of this manual entitled “Collecting Data over the USB Port or Serial Port in Real Time” (Section 3.4). Listed below are the lower-case letters that are commands for performing certain operations while the instrument continues to measure:

- l** Start logging and write over existing logged data
- t** Transmit logged data
- e** End logging
- h** Output serial data line header
- n** Output serial number of the instrument
- m** Serial menu

If the letter **m** is sent as a command, **menu>** will be displayed in the terminal emulator window. When the serial menu is accessed, the instrument is no longer making measurements; it is waiting for the next command to be entered. The next page shows the list of menu items accessible from this point:

-
- l** Start logging and write over existing logged data (also available during measurements).
 - t** End logging and transmit logged data (also available during measurements).
 - e** End logging (also available during measurements).
 - a** Displays list of possible averaging times and waits for the user to enter the number to change to the desired averaging time.
 - z** Displays current zero calibration setting and waits for new setting followed by a carriage return (must be entered in units of ppb).
 - s** Displays current slope calibration setting and waits for new setting followed by a carriage return.
 - c** Asks user to enter the time in HHMMSS format.
 - d** Asks user to enter the date in DDMMYY format.
 - g** Outputs GPS data sentences directly from GPS (enter x to return to the menu and then to measuring).
 - h** Output serial header (also available during measurements).
 - n** Output the serial number of the instrument.
 - u** Performs a lamp test (enter x to return to the menu and then to measuring).
 - f** Sets pump mode to FAST (2-second cycles).
 - q** Sets pump mode to QUIET (4-second cycles).
 - b** Displays current Adaptive filter difference and waits for new setting followed by a carriage return. (Factory default setting is 0.)
 - i** Displays current Adaptive filter percent and waits for new setting followed by a carriage return. (Factory default setting is 0.)
 - k** Displays current Adaptive filter long average length and waits for new setting followed by a carriage return. (Factory default setting is 50.)
 - m** Displays current Adaptive filter short average length and waits for new setting followed by a carriage return. (Factory default setting is 10.)
 - p/o** Toggles the LCD backlight on and off.
 - ?** Prints the help menu.
 - x** Exit menu and return to measuring.

9. USB INSTALLATION

The following procedure describes how to install the USB connection for the Model Personal Ozone Monitor. For computers with the Windows 10 operating system, it is not necessary to install a driver (i.e., skip Section 9 below, and proceed to Section 10). Windows 10 systems will automatically load a driver for the USB.

9.1. Items Required if not using Windows 10

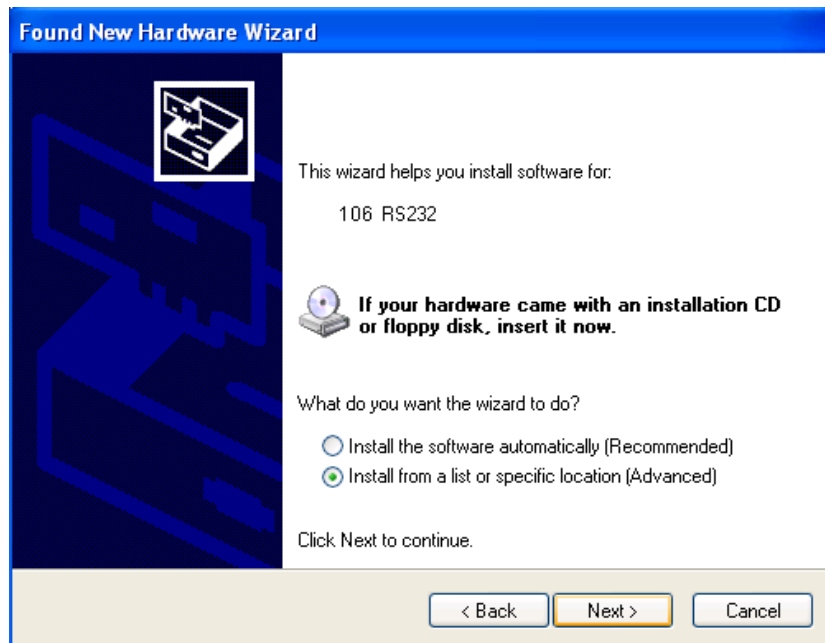
1. Personal Ozone Monitor
2. USB Cable (supplied with POM)
3. PC Computer with Windows 2000, XP, Vista, 7 or 8
4. USB to UART Driver Disk (or download from [2B Tech website](#))

9.2. Driver Installation (if not using Windows 10)

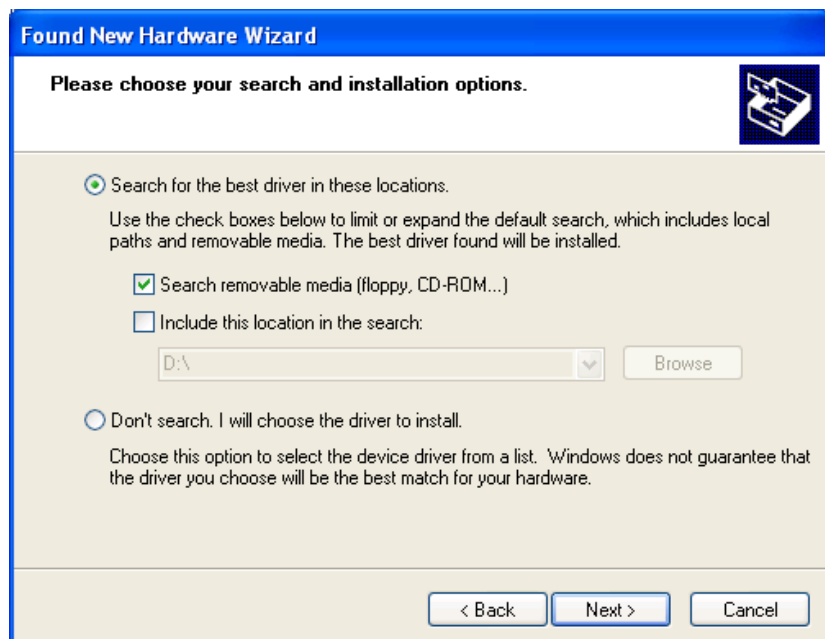
1. Insert USB to UART Driver Disk in the computer's CD ROM drive or download the Model POM USB Driver from the 2B Tech website.
2. The installation files are located in a zip folder. Navigate to the folder labeled "cdc_NTXP" and double click on it.
3. Unzip the contents to a folder on the desktop or any area you wish.
4. With the POM off, attach USB cable from the POM to a USB port on the computer.
5. Turn on POM. The install wizard should pop up as follows. Select "No, not this time" and click "Next".



6. Select the “Install from a specific location” option and click “Next”.



7. Navigate to folder where you unzipped the cdc_NTXP.



8. Select “Continue Anyway” when this window appears.



9. After a few seconds, the driver will be finished installing.

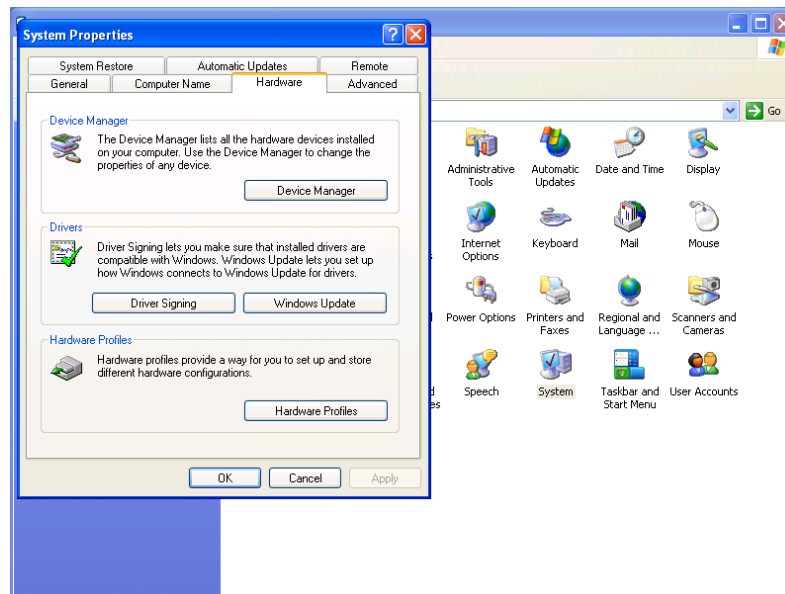


10. USING THE USB CONNECTION

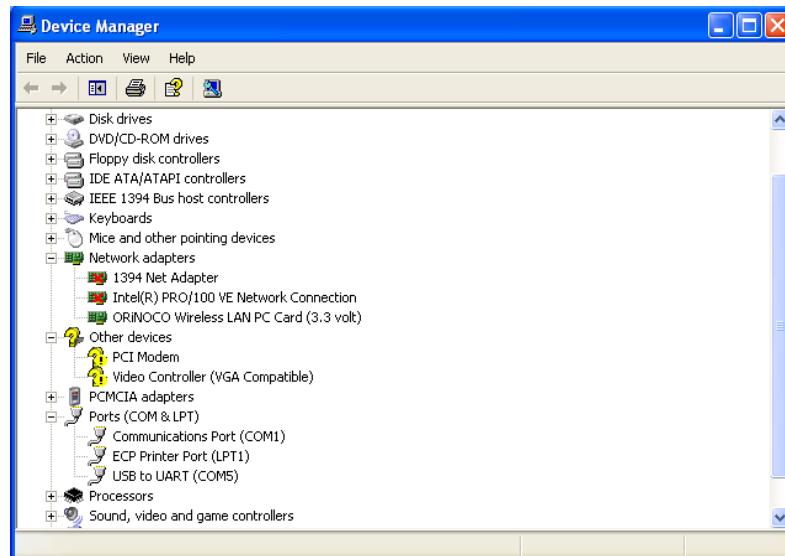
10.1. Determine the Connection Port

After the USB driver installation is complete (Section 9), determine which COM port the connection is using. This can be done by the following procedure.

1. If using Windows (10, XP, Vista, 7, 8), go to the control panel and select “System”.
2. Click on the “Hardware” tab.



3. Click the “Device Manager” button.
4. Press the “+” sign next to “Ports”.



-
5. In Parenthesis, next to the “USB to UART” listing is the assigned COM port number. This number will be used for the settings for the 2B Tech software or terminal emulator (such as Tera Term) used to read data from the POM.

10.2. Using the Connection

- Plug the USB cable in after the powering the POM to ensure correct functionality.
- When setting up your software or terminal emulator, choose the correct COM port listed in the Device manager.
- Use these baud rate settings: 19200, 8 bits; no parity; 1 stop bit.
- Use [2B Technologies Display and Graphing Software](#) to read measurement data from the POM. Other software, such as [Tera Term](#) may also be used.

11. CALIBRATION

11.1. Overview

Every analytical instrument is subject to some drift and variation in response, making it necessary to periodically check the calibration. Dynamic calibration is a multipoint check where gas samples of known concentrations are sampled by the instrument in order to determine a calibration relationship. For more information on calibration of ozone monitors refer to the Code of Federal Regulations ([Title 40, Part 50, Appendix D](#)) and the EPA's [Technical Assistance Document for the Calibration of Ambient Ozone Monitors](#).

Calibration is the process of adjusting the gain and offset of the Personal Ozone Monitor against some recognized standard. The reliability of the data collected from any analytical instrument depends on the accuracy of the calibration, which is largely dependent upon its analytical traceability to a reference material or reference instrument calibration.

Because of the instability of ozone, the certification of ozone concentrations in a compressed gas cylinder is impossible due to loss of ozone over time. When ozone concentration standards are required, the ozone must be generated and certified on site. The following information is based on EPA requirements for calibrations of ozone monitors for monitoring in compliance with the U.S. Clean Air Act. Similar procedures are recommended for other applications as well.

Ozone standards can be classified into two basic types:

1. A **Primary Ozone Standard** is the combination of an ozone generator and an ozone monitor based on UV absorbance (a UV photometer) that has been setup in accordance with the procedures prescribed by the U.S. Environmental Protection Agency (EPA) under Title 40 of the Code of Federal Regulations, Part 50, Appendix D (40 CFR Part 50).
2. An **Ozone Transfer Standard** is a system (a portable ozone monitor and/or a portable ozone generator) that can produce accurate ozone concentration standards that are quantitatively related to a primary ozone standard. An example of an ozone transfer standard is the 2B Technologies Model 306 Ozone Calibration Source. Ozone transfer standards must be certified before use in accordance with the procedures prescribed by the U.S. Environmental Protection Agency (EPA) under Title 40 of the Code of Federal Regulations, Part 50, Appendix D (40 CFR Part 50).

11.2. Equipment Required

The equipment that is needed to carry out the calibration is commercially available, or it can be assembled by the user. Calibration using a primary ozone standard involves the generation of ozone concentrations that are simultaneously measured by a primary ozone standard and the instrument undergoing calibration. This procedure requires the following equipment:

1. Zero air source
2. Ozone generator
3. Sampling manifold (inert material such as PTFE or FEP only)
4. Sampling lines (inert material such as PTFE or FEP only)
5. UV Photometer

Use of a certified transfer standard for calibration involves the generation of ozone concentrations, using the calibrated ozone generator, that are measured by the instrument undergoing calibration. This procedure requires the following equipment:

1. Zero air source
2. Certified Transfer Standard
3. Sampling manifold (inert material such as PTFE or FEP only)
4. Sampling lines (inert material such as PTFE or FEP only)

Zero air can be generated either from compressed cylinders or from scrubbed ambient air. If ambient air is used, contaminants such as ozone and nitric oxide must be removed. Detailed procedures for generating zero air are in the EPA's [Technical Assistance Document for the Calibration of Ambient Ozone Monitors](#).

11.3. Instrument Preparation

Prior to calibration, follow the steps below:

1. Turn on the Personal Ozone Monitor and allow it to stabilize for a minimum of one hour.
2. Connect the instrument to the manifold on the ozone calibration setup. If a particle filter will be used in normal operation, the calibration must be performed through the filter. The manifold must be vented to atmosphere so that pressure does not build up in the calibration setup. Connection of the POM directly to a pressurized output of any device can damage the Personal Ozone Monitor.
3. Verify that the flow rate into the manifold is greater than the total flow required by the instrument and any other flow demand drawing from the manifold.

11.4. Calibration Setup Preparation

As indicated in the EPA Technical Assistance Document there are several tests that should be performed prior to calibration to ensure the accuracy of the measurements. These tests include:

- Setup check
- Ozone loss test
- Linearity check
- Intercomparison test

11.4.1. Setup Check

A visual inspection of the calibration setup should be performed before calibration to verify that the setup is in proper order. All plumbing connections should be checked and verified to follow the manufacturer's instructions. Any obvious leaks should be fixed and the manifold and sampling lines should be checked for general cleanliness. For more information, refer to the manufacturer's User Manual for the primary ozone standard or ozone transfer standard.

11.4.2. Ozone Loss Test

Some ozone may be lost in the calibration setup due to reaction with the walls of the manifold and sampling lines. Any significant loss of ozone must be measured and be subsequently applied to correct the calibration measurements. For more information, refer to the manufacturer's User Manual for the primary ozone standard or ozone transfer standard.

11.4.3. Linearity Check

Since the Personal Ozone Monitor is inherently linear over several orders of magnitude, a linearity check provides a test that the instrument is operating properly. Instrument linearity can be checked by comparison to an ozone standard (see Section 12.4, "Calibration Procedure – Calibration Curve") or by dilution of an ozone measurement. To check the instrument linearity by dilution of an ozone measurement, generate and measure a concentration of ozone near the upper range of ozone concentrations to be measured using the POM. Additional ozone concentrations should be generated by accurately diluting the ozone flow with zero air and each concentration should be measured once the instrument reaches a stable response. The accuracy of the linearity test relies on the accuracy of the flow meters used to perform the dilution. The percent of non-linearity is calculated from the formula:

$$R = \frac{F_o}{F_o + F_d} \quad (2)$$

$$E = \frac{C_1 + \frac{C_2}{R}}{C_1} \times 100\% \quad (3)$$

where:

- R = Dilution ratio
- F_o = Ozone generator flow
- F_d = Diluent zero air flow
- E = Linearity error, in percent
- C₁ = Measured concentration of original concentration
- C₂ = Measured concentration of diluted concentration

The linearity error should not be greater than 5%. If the error is greater than 5%, the accuracy of the flow dilution should be checked before assuming that the instrument is not linear. Note that the inherent linearity of the POM is better than the error calculated in this linearity check due to the uncertainty introduced by the flow measurements.

11.4.4. Intercomparison Test

Comparison of the calibration setup with other ozone standards is a good check of the overall accuracy of the setup. If measurements from another ozone standard are found to deviate from the calibration setup greater than the instrument specifications, one of the calibration setups is not accurate.

12. CALIBRATION PROCEDURE

A multipoint calibration should be performed within the calibration frequency, any time major disassembly of components is performed, or any time the zero or span checks give results outside of the acceptable limits. The instrument may be returned to 2B Technologies for calibration service. Alternatively, the user may perform the calibration using the suggested procedure below.

12.1. Instrument Preparation

1. Turn on the Personal Ozone Monitor and allow it to stabilize for a minimum of one hour.
2. Enter the calibration menu (**Main Menu / Cfg / Cal / O3**) and set the zero (Z) value to 0 and the slope (S) value to 1.00.
3. Connect the Personal Ozone Monitor to the manifold on the ozone calibration setup. If a particle filter will be used in normal operation, the calibration must be performed through the filter. The manifold must be vented to atmosphere so that pressure does not build up in the calibration setup. Connection of the POM directly to a pressurized output of any device can damage the instrument.
4. Verify that the flow rate into the manifold is greater than the total flow required by the Personal Ozone Monitor plus any other flow demand drawing from the manifold such as a UV photometer or ozone transfer standard.

12.2. Measurement of Zero Air

1. Verify that the zero air supply is on and the ozone generator is off. The same zero air supply used in the ozone generator must be used in the zero air measurement.
2. Allow the POM to sample zero air until the response is stable.
3. Record the average zero air response.

12.3. Measurement of Ozone Standards

1. Generate an ozone concentration slightly less than the concentration range of interest and allow the ozone generator to warm up for at least 5 minutes. The same zero air supply used for making zero air measurements must be used in the ozone generator.
2. Allow the Personal Ozone Monitor to sample the ozone concentration standard until a stable response is measured.
3. Record the average response of the Personal Ozone Monitor as well as either the average response of the UV photometer or the transfer standard.
4. Generate several other ozone concentration standards. At least 5 ozone concentration standards are recommended over the range of interest.
5. For each ozone concentration standard, record the response of the Personal Ozone Monitor as well as either the response of the UV photometer or the transfer standard.

12.4. Calibration Curve

1. Plot the POM Monitor responses (y-axis) versus the corresponding standard ozone concentrations (x-axis).
2. Fit the data to a straight line ($y = mx + b$) using the linear regression technique to determine the calibration relationships, where m = slope and b = intercept.
3. Determine if any points deviate significantly from the line, which is an indication of an error in determining the calibration curve. The error may be due to the calibration setup or the Personal Ozone Monitor being calibrated. The most likely causes of problems for the POM are leaks, a malfunctioning ozone scrubber, a contaminated valve, or contamination in the optical setup. See the “Troubleshooting” section of this manual (Section 13).
4. The inverse of the slope of the line ($1/m$) is the gain factor (S) and the negative of the intercept ($-b$) is the offset (Z , in units of ppb) that need to be applied to the instrument response to calibrate it to the primary ozone standard. If the intercept is outside of the range from -10 to 10 or the slope is outside of the range from 0.90 to 1.10 , this is an indication of a problem in the calibration setup or the instrument being calibrated. The most likely cause of errors in the POM are leaks, a malfunctioning ozone scrubber, a contaminated valve, or contamination in the optical setup. See the “Troubleshooting” section of the manual (Section 13).
5. Enter the calibration menu (**Main Menu / Cfg / Cal**) in the instrument firmware and set the calibration parameters Z and S as determined above. Note that if the calibration is done in units other than ppb, the Z value must be converted to ppb before entering the number into the calibration menu.

12.5. Periodic Zero and Span Checks

To ensure the quality of the Personal Ozone Monitor data, periodic zero and span checks can be performed by following the steps below:

-
1. A zero check is performed by sampling zero air with the POM as described in Section 12.2 above, "Measurement of Zero Air."
 2. A span check is performed by sampling an ozone concentration at the high end of the concentration range of interest following the "Measurement of Ozone Standards" Section 12.3 above.
 3. Average measurements from the zero check or span check should be within the instrument specifications. If the measurements are not within specifications, this is an indication of problem in the calibration setup or the POM being checked. The most likely causes of problems in the POM are leaks, a malfunctioning ozone scrubber, a contaminated valve, or contamination in the optical setup. See the "Troubleshooting" section of this manual (Section 13).

13. MAINTENANCE/TROUBLESHOOTING

The Personal Ozone Monitor is designed to be nearly maintenance-free. The only component that requires routine maintenance is the internal ozone scrubber, which should be changed at least once every six months (~4,000 hours) of operation. Return the instrument to 2B Technologies for replacement of the internal ozone scrubber.

Also, the inlet filter (user supplied) should be changed as recommended by the filter manufacturer.

Other components with a limited lifetime are the air pump (~3,000 hours), lamp (~20,000 hours) and solenoid valve (rarely fails). It is recommended that the instrument be returned to 2B Technologies if any of these components fail.

The following are indications of various instrument malfunctions.

Air Pump Failure: The instrument will not make a humming sound. Also, the circuit breaker may prevent the instrument from powering up if the motor in the air pump develops a short.

Lamp Failure: The ozone measurements will be erratic and the Lamp Test will show 0.0 volts for the photodiode voltage.

Solenoid Valve Failure: The ozone readings will be low and average to close to zero if the solenoid valve is not switching. Partial switching of the solenoid valve will cause the instrument to read low but not zero.

Contaminated Flow Path: The instrument will typically have a large positive or negative offset, and the ozone readings will be low once corrected for the measured offset.

Help with trouble shooting is provided in the following table. Because the POM instrument is constructed to be extremely compact, we recommend returning it to 2B Technologies for any repairs or diagnostics that require disassembly (including cleaning of the flow path and/or replacement of the internal mercury scrubber, pump, lamp, or solenoid).

Table 13.1. Troubleshooting the Personal Ozone Monitor for performance problems.

Problem/symptom	Likely cause	Corrective action
<i>Instrument does not turn on.</i>	Power not connected properly or circuit breaker open.	Check external power connection for reverse polarity or a short and wait a few minutes for the thermal circuit breaker to reset.
<i>Instrument turns on then powers off.</i>	Burned out air pump.	Return the instrument to 2B Tech for replacement of the air pump.
<i>Readings are noisy with standard deviations greater than 2.5 ppb.</i>	Lamp output is weak, below 0.3 V on Lamp Test.	Return the instrument to 2B Tech for replacement of the lamp.
	Flow path contaminated.	Return the instrument to 2B Tech for cleaning.
<i>Required calibration parameters are large (>±9 ppb offset and/or >±9% slope) when calibrated using a standard ozone source or reliable ozone instrument.</i>	Internal ozone scrubber is contaminated.	Return the instrument to 2B Tech for replacement of the internal ozone scrubber.
	Flow path is contaminated.	Return the instrument to 2B Tech for cleaning.
	Solenoid valve is contaminated and not opening and closing properly.	Return the instrument to 2B Tech for replacement of the solenoid valve if not working properly.
	Air pump is not drawing sufficient flow.	As a first check, hold your finger over the air inlet to determine whether air is being drawn in. If there is flow, measure the flow rate by attaching a high conductance flow meter to the air inlet. Air flow should be greater than 0.5 L/min when making measurements. If flow is lower, check for leaks. If there are no leaks, return the instrument to 2B Tech for replacement of the air pump.

2B Technologies offers reasonably priced customer service for instrument repairs. The calibration service includes cleaning of the entire flow path with methanol, testing of all components for proper function, installation of a new internal ozone scrubber and calibration against a NIST-traceable standard. The best way to contact us for service is to log a customer service ticket at <https://2btech.io/support/>. Normally, you will hear back from us by email within a few hours. Or, call us at +1(303)273-0559.

There is a great deal of technical information about our instruments posted as [technical notes](#). Manuals, brochures, software, technical notes, and scientific papers may be downloaded at <https://2btech.io/downloads/>

14. LABELED INSTRUMENT PHOTOS

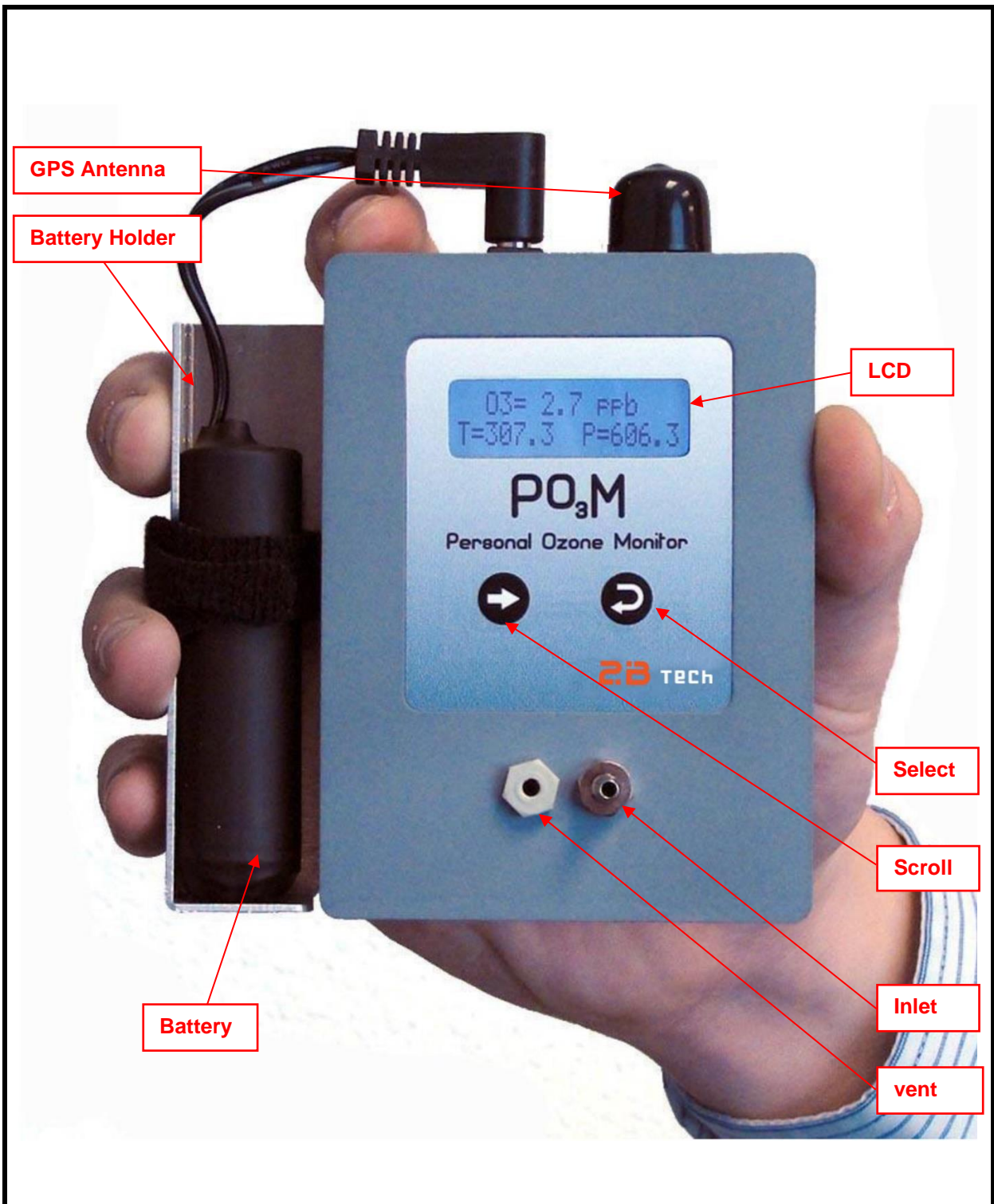


Figure 14.1. Front Cover of the POM.

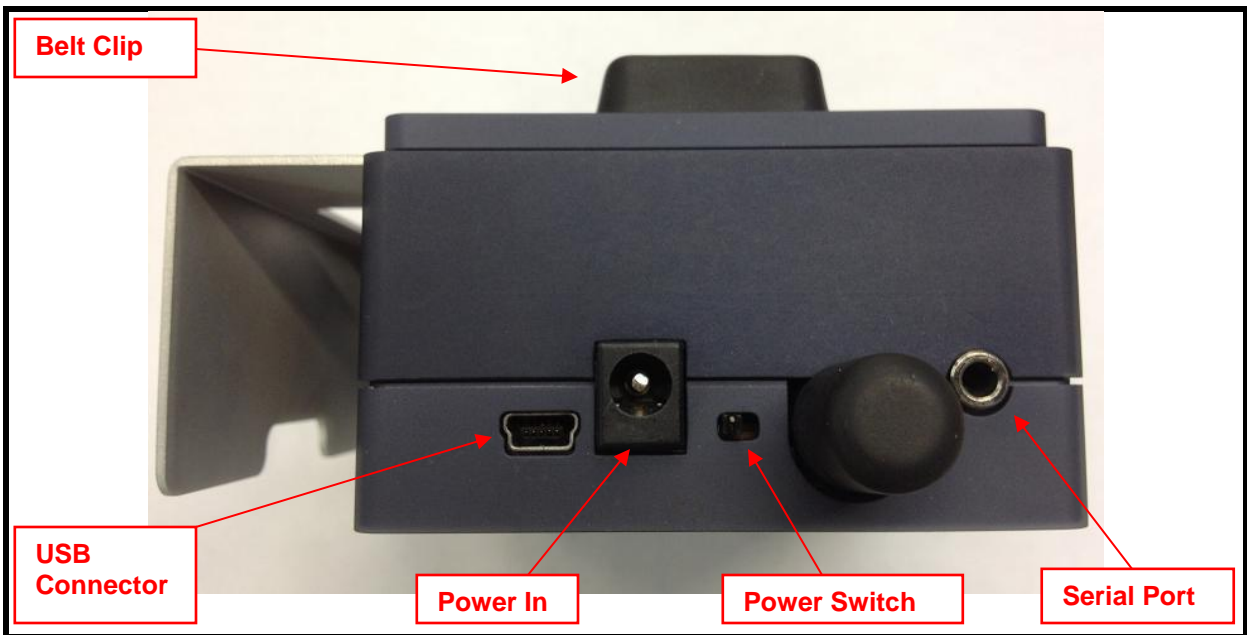


Figure 14.2. Top View.

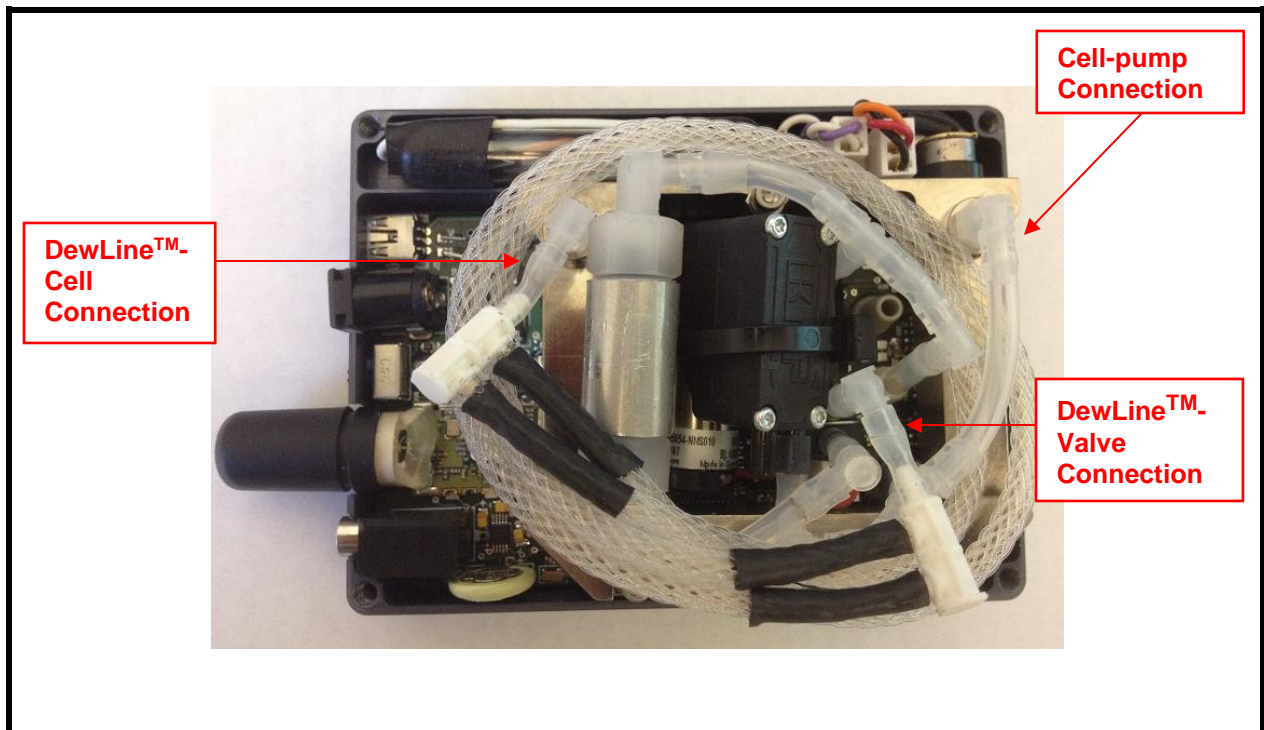


Figure 14.3. Inside View.

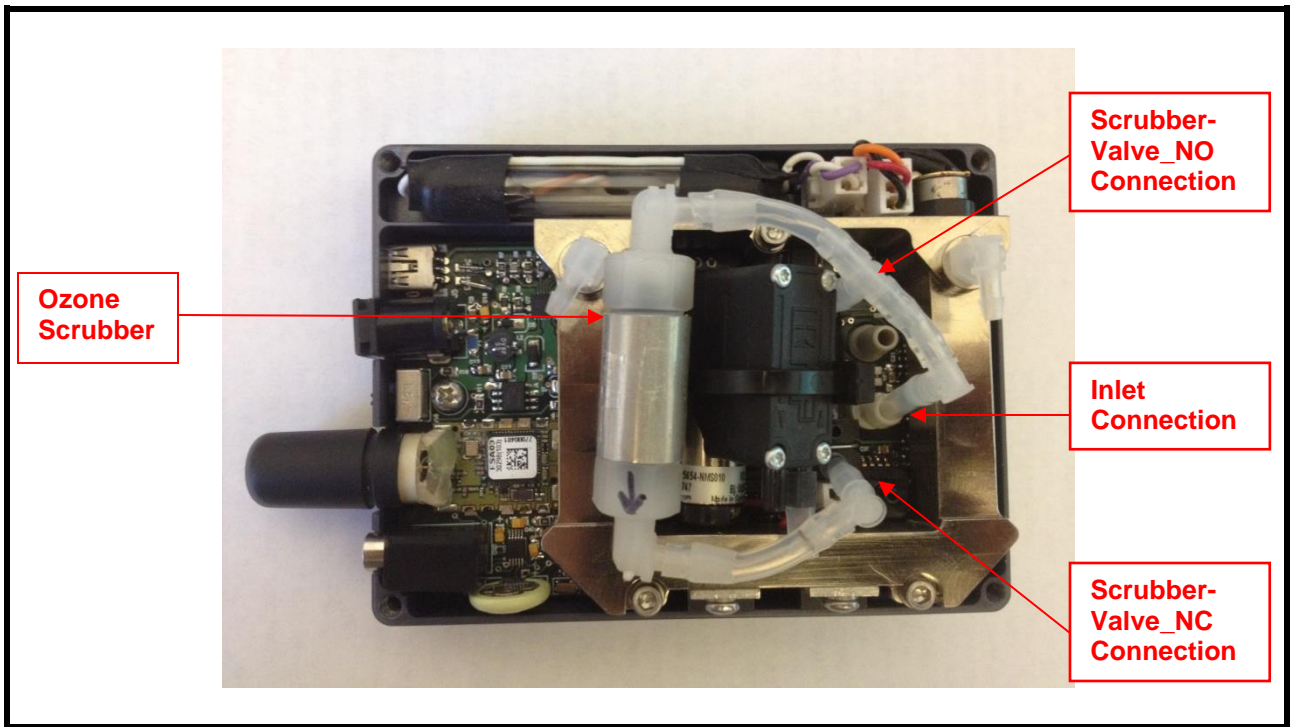


Figure 14.4. Inside view without Nafion DewLine™.

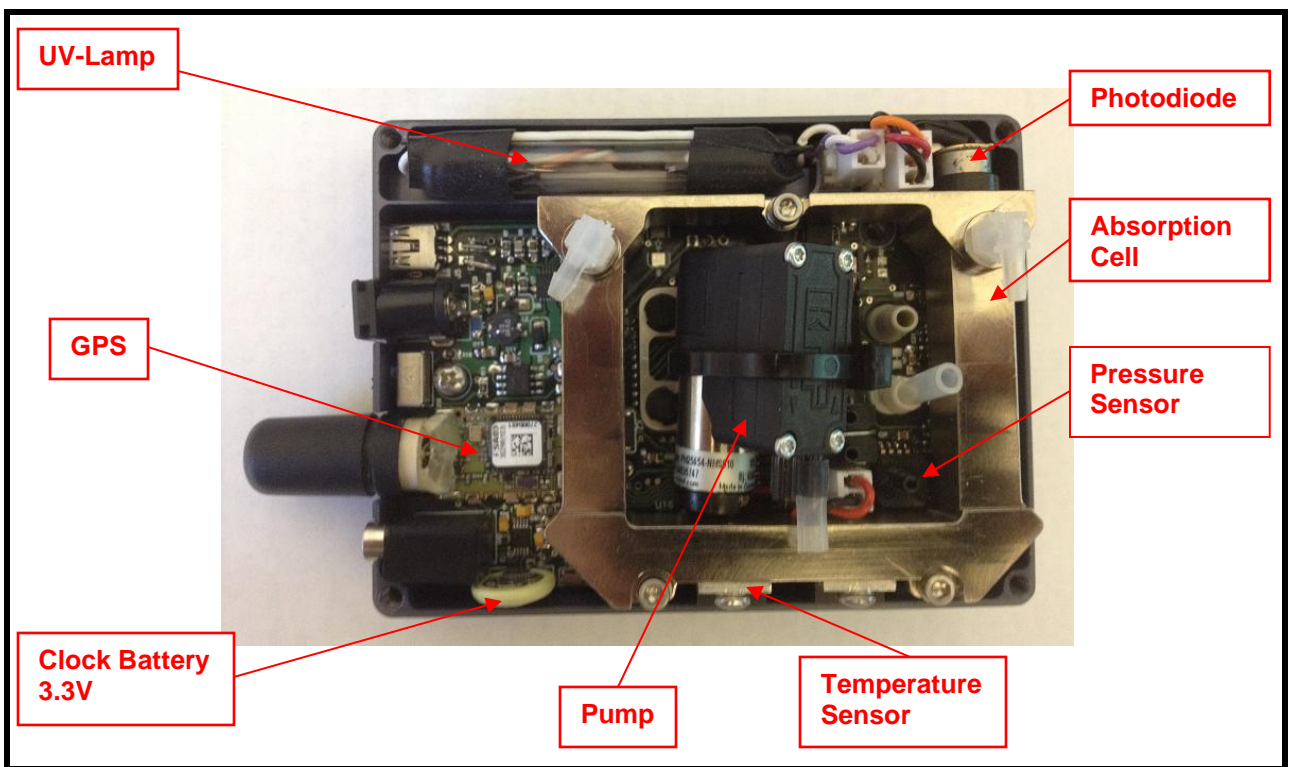


Figure 14.5. Inside view without Scrubber or Nafion DewLine™.

15. PARTS LIST

The following list includes those parts that are user serviceable by the user.

It is recommended that the instrument be sent to 2B Technologies servicing of any internal parts.

Part Name	Part Number	Description
SCRBEXTPOM	10-777	Ozone zeroing scrubber (external)
SERCABLPOM	10-776	Serial port cable, Stereo-RS232 (to computer)
USBMNICABL	10-031	Mini USB cable (to computer)
SERUSB	10-004	Serial to USB cable
BATTEXT(POM)	10-775	Battery assembly for POM, 7.4 V
BATTCHG(POM)	10-778	Battery charger assembly for POM
TEFTYG25	11-039	Teflon-lined Tygon® tubing (25 ft)
TEFTYG05	11-038	Teflon-lined Tygon® tubing (5 ft)
SILTUB05	10-422	Silicone tubing (5 ft)

Appendix A: Using the 2B Technologies Display and Graphing Software

Copyright© 2B Technologies. All rights reserved.

Introduction

2B Data Display® is an easy way to display and save data from your serial or USB connection.

With easy one-click operations, data are read from your instrument and displayed on an extremely versatile chart. Two items, such as Ozone and Temperature, can be displayed simultaneously on the chart with multiple zoom levels. Data are automatically saved to a .txt file and can optionally be saved to a .CSV file to be read in Excel. Saved data can be restored for later viewing and analyzing on the chart. You can also upload your data and view it on a Google Earth overlay.

Downloading the Software

Go to <https://2btech.io/downloads/> and access the Software archive. Click the link for “2B Tech Display and Download Software.” Follow the instructions, doing the two installations if needed and choosing to save the “setup.exe” file. Double-click the setup.exe download to launch the 2B Data Display application. Check the website frequently to be sure you are using the most recent version of the software, and download the new version if needed.

Connecting Devices

Connect to a Monitor

1. Select the device you are connecting to from Settings: Select Device...
2. Click OK.
3. Select the Connection you will be using from Settings: Connection...
Choose the settings as follows:
 - a) Port:
 - The default port is “COM1” for computers with a serial port.
 - If using a USB connection, check for the correct port in the “Device Manager” under “Ports” located in: Control Panel : System : Device Manager.
 - If using a USB to Serial adapter, check for the correct port the same as for a USB connection and look for the name of the adapter (e.g., Belkin, Prolific, or other USB to Serial adapter manufacturers).
 - b) Baud Rate: The Default baud rate of the software is 2400. Check your monitor’s settings in the “Cfg / I/O” menu and match the software with the monitor’s setting (19200 for the POM). Note that for the USB port, the baud rate must match the baud rate of the Monitor at the Monitor’s startup.
 - c) Parity: None
 - d) Data Bits: 8

-
- e) Stop Bits: One
 4. Click Start button in the Instrument Data Capture section in the upper left corner of the main screen.
 - a) The “Save As” window will appear. A default file name will appear which is made of the date and time. You may change the filename and change where it is saved if you wish.
 - b) Click the “Save” button. This will start the data capture software and data will fill into the chart as they are transmitted from the device.
 - c) The red OFF text will change to green ON text. The text: Waiting for data... will appear until data arrives from the instrument. If the instrument measurement frequency is set to 2 seconds (fast mode), you will see a data point every 2 seconds. The instrument can be set to 10 seconds (measurement mode) or to averaging modes of 1 minute, 5 minutes, and 1 hour in the Avg submenu on the instrument.

Connect to Weather Station (Davis Vantage Pro)

1. Be sure the weather station is physically connected to the USB port or Serial port of the computer.
2. Select the COM port for the weather station from *Settings : Weather Connection Settings...*
3. Select “Retrieve Weather Data” from the “Weather Link” menu. A window will appear and the software will try to retrieve the weather station data. If the connection is good, weather data will be displayed in the window. If not, an error message will appear. Try a different com port if the error message appears. You may move this window so it is out of the way or you may close it. The weather data is updated every 5 seconds.
 - Since the Monitor and the Weather Station both use COM ports, you may have to unplug one of the USB adapters from the PC to determine which device is using which COM port.
4. To bring up the window again if you have closed it, select “Display Weather Data.”

Viewing Data

The Data Grid Tab

1. Make sure the application is connected to a device or that you have opened a previously saved data file.
2. Click the *Data Grid* tab on the right side of the screen.
3. The data lines received from your instrument will be listed in a grid with the latest point at the top.
4. The header contains the device specific variables (e.g., Ozone, Cell Temp...). Log Number is always listed even if your instrument is not set to log.

The Charts Tab

1. Make sure the application is connected to a device or you have opened a previously saved data file.
2. Click the *Charts* tab on the right side of the screen.

-
3. Select which data items to display from the drop down windows “Data 1” and “Data 2.”
 4. The data points will appear in a graph window in the middle of the screen.
 5. Adjust the zoom level by pressing the + or – buttons under the *Settings* button (upper right side of screen).
 6. Adjust the Y scale or set the *Auto Range* feature by pressing the *Settings* button
 - a. Check the *Auto Range* box to use autoscaling.
 - b. Uncheck the *Auto Range* box to manually set Y max and Y min for the Data 1 and Data 2 fields.

The Buffer Tab

- Selecting the Buffer tab brings up a buffer window, similar to Tera Term or HyperTerminal, where all data from the serial port are displayed.
- From this tab, the user can also send commands through the serial port by typing on the keyboard. This is only applicable if the device that is connected accepts serial commands. See the instrument manual for a list of the serial commands.
- This buffer window can also be used for troubleshooting for instances when: the baud rate, device, or serial port is unknown. For example, if the status bar in the “Instrument Data Capture area states “Receiving...” and no data appear in the Data Grid or the Charts, click on the Buffer tab to view the serial data. If the correct device is not selected, no data will be displayed in the Data Grid or the Charts, but data will be displayed in the Buffer window.

Google Earth

See the end of this Appendix for information on viewing the POM GPS data in Google Earth.

Saving Data

Saving Data to a .txt File

1. Click the *Start* button in the Instrument Data Section to begin collecting data from the instrument.
2. A window will pop up to prompt for the name and location of the file.
3. Click *Save* to begin the data collection.
4. All data read from the monitor through the COM port are written to the .txt file in real time until *Stop* is clicked.

Saving Data to a .CSV or an Excel File

NOTE: Weather data are NOT saved to the .txt file. In order to save weather data, be sure to save a .CSV file after *Stop* is clicked.

1. After collecting data, click the *Stop* button in the Instrument Data Capture Section on the main screen.
2. A window will pop up to ask you if you would like to save to a CSV file as well. Click *Yes*.
3. A default name appears from the date and time of the data capture. You may change the name and path of the file if you wish.
4. Click on the *Save* button.

Opening Files

1. To open a file, click *Open* from the *File* menu.
2. Navigate to the folder where the file was stored.
3. Select either the .txt file or the excel file and press *Open*.
 1. NOTE: To view weather data, you must open the corresponding .CSV file.
4. Choose the correct device associated with the file.
 - a. If you are unsure, open the file in a text editor or Excel to determine which device.

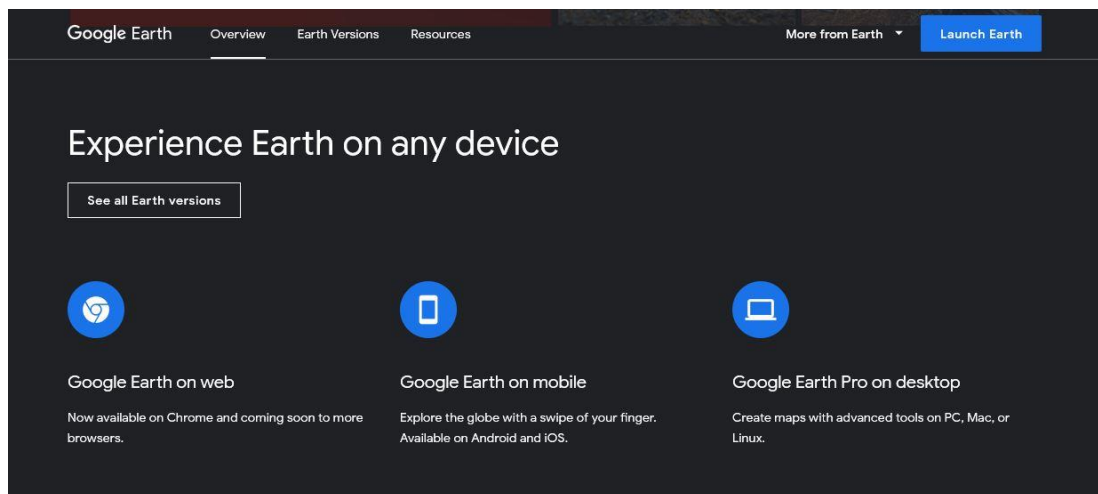
Serial and USB Commands

The menu commands are the same as given in Section 8 of this manual.

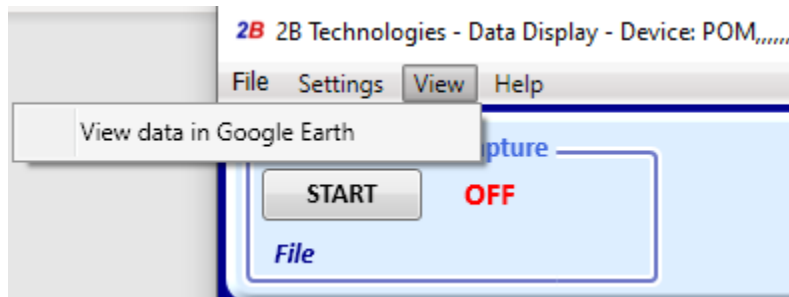
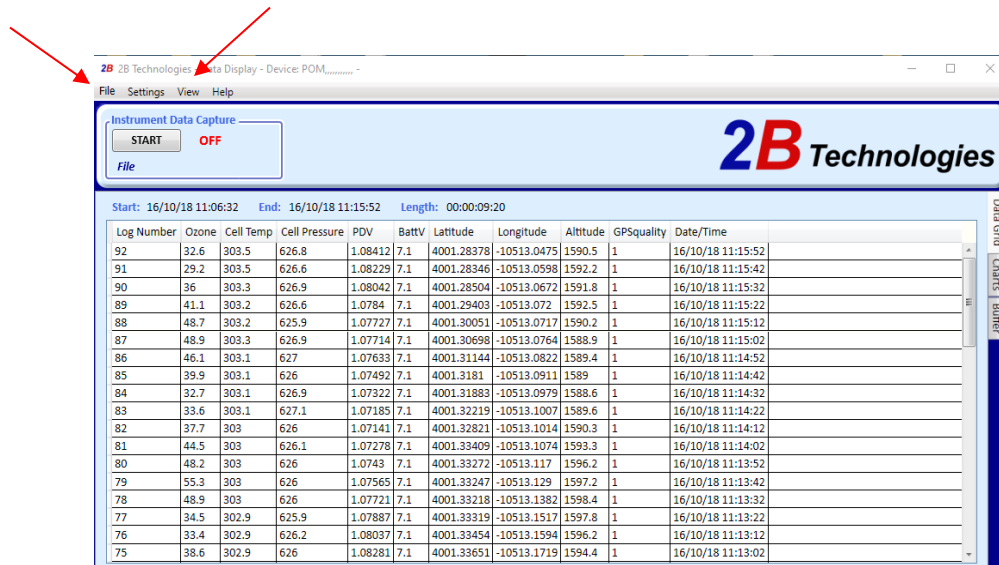
Using Google Earth to View POM GPS Data

If you are using the POM to do mobile ozone monitoring, the 2B Data Display software enables you to use Google Earth to display the POM's locations. The steps below describe how to carry this out.

1. Download Google Earth, available for free from the website shown here: <https://www.google.com/earth/versions>. For example, download Google Earth Pro for use on your computer.

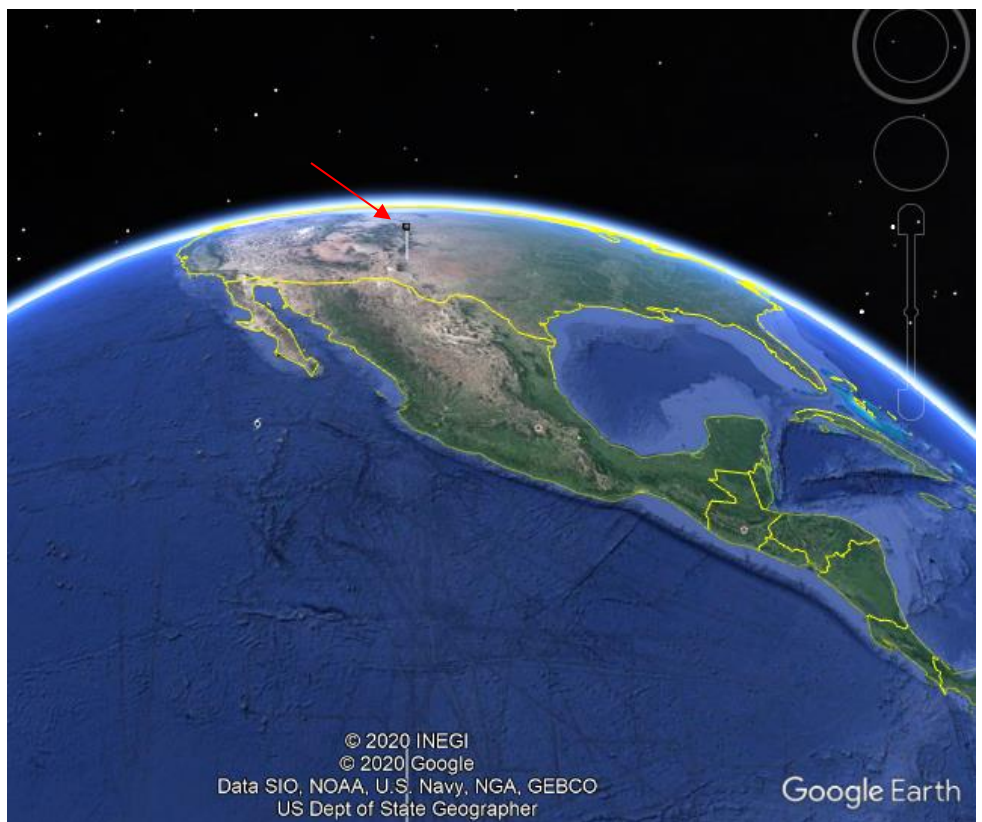


2. With your POM data in the 2B Data Display window, click on the “View” tab and choose to view the data in Google Earth. (Alternatively, to display a dataset previously acquired by the POM, choose “File” “Open” in the 2B Data Display software to load your csv data file, and then use the “View” tab.) See screens on next page.



- The software now takes you into Google Earth and shows a wide view.

The location of your data set is seen as a very small black square in this wide view (red arrow shown at right).



4. Use the slider on the right side of the Google Earth window to zoom in to the location of your data collection. Eventually, the single black square will transform to show the data points you collected. Each point is a white square with a black center, located on the Google Earth projection at the appropriate GPS location.
5. Click on any of the squares to view the time, date, and ozone value of the particular data point.

